

## ADVICE FROM THE DESIGNER

"A small to medium sized kitchen has to be thoroughly thought through. Don't fall victim to wanting it all and attempt to fit in absolutely everything you'd like to have. Do make a list of what you really need and what you'd like to have, then prioritise and start to place the items in a sensible way."

Do consider how you cook, entertain and so on, and arrange the basics not too far from each other allowing you to swiftly move between them without having to run from one end to the other."

Dorothee Junkin, director and lead designer Architecta

## RUSTIC RETREAT

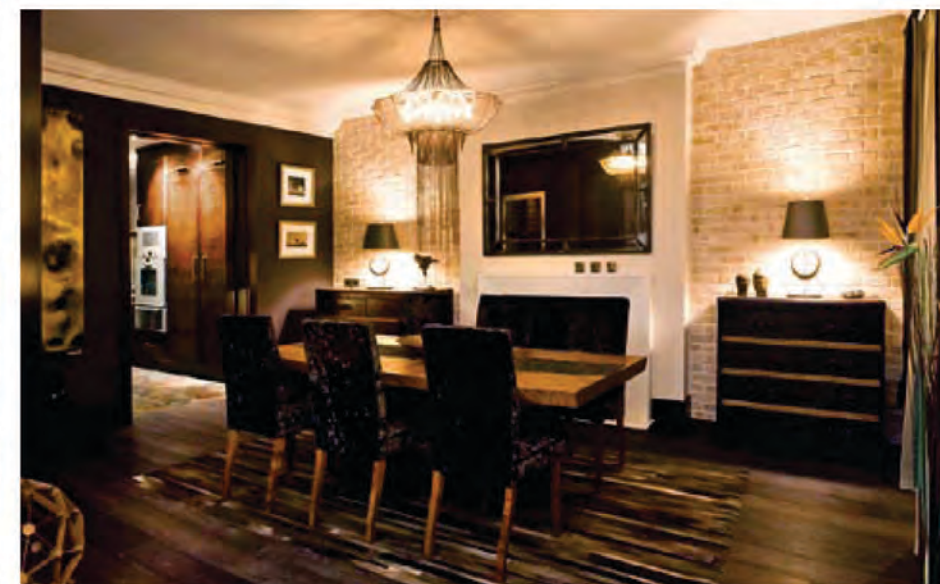
This bachelor homeowner frequently entertains, his ideals of high-end convenience, warm tones and textures have resulted in a rich masculine apartment – and many compliments



A young successful bachelor as a starter home purchased this three-bedroom apartment in St John's Wood. It is situated in an elegant purpose built portered mansion block in one of London's prime central residential neighbourhoods. The homeowner decided to go for a complete refurbishment before moving into the property. The homeowner, a bachelor, was interested in a masculine subtly rustic design, with vintage as well as contemporary influences. As he frequently entertains guests using the services of a private chef, he decided against an open kitchen. Dorothee Junkin, director and lead designer at Architecta Ltd who did the interior design, designed a large sliding door, which can disappear completely into a wall. It was custom-made in American

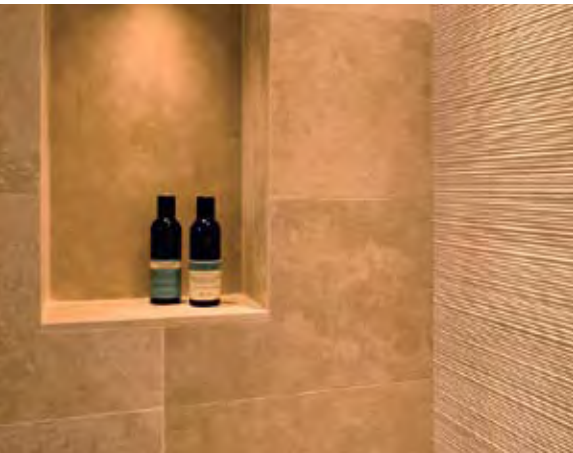
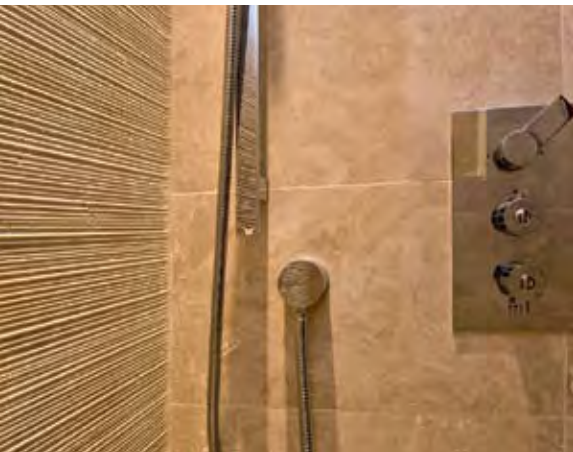
Walnut with a custom stain finish and fitted by Paragon Furniture to match the kitchen they made.

"I do like the final design," says the homeowner, continuing, "The tiles are rich in colour and the wood of the kitchen units has a warm tone, too. It's not all white and polished and cold. My favourite part is how the light shows the texture of the tiles on the wall. And the good appliances! The kitchen is very functional and I can reach things easily. When I don't have guests, the sliding door to the kitchen is mostly open and the dining and kitchen area almost feel connected. I actually prefer it this way and the materials of the kitchen and dining area do work well together." ● ● ●





# Main bathroom



For some bathrooms in the apartment, like the master ensuite, the homeowner had a rather precise idea of what he wanted. The master ensuite is masculine and in the earthy colours of brown and beige. He explains, “I wanted my private ensuite to be simple and of natural stone. And I really wanted a large walk-in shower. We needed to add one small step, as the floor is concrete and we could not fit the pipes in the floor without causing trouble for the apartment below.”

Dorothee adds, “I like the colour and texture of the travertine and did not want to distract from it, so I chose a glass sink to go with it, which also made the room feel larger.”●●●



“I like the colour and texture of the travertine and did not want to distract from it, so I chose a glass sink to go with it, which also made the room feel larger”



## Second bathroom



Bathroom two is a bit more feminine in its design scheme and is paired with a sparkly champagne-like custom blend mosaic-clad bathroom. The mosaic graduates becoming paler towards the ceiling, which makes the room appear slightly larger. "John Cullen Lighting did provide a basic lighting plan, which was developed based on discussions between the lighting designer and myself," says Dorothee, continuing, "I then refined and adapted the basic scheme as required in the course of the project. One of the key aspects for the bathroom lighting was to allow for downlights along the textured walls to really highlight the feature materials."



## Third bathroom



'The slightly asymmetric shape of the sanitaryware gives it the contemporary edge'

In bathroom three the contrast is very defined and the structure in the white Carrara marble tiles and subtle glitter of the dark mosaic just add another layer of detail. The slightly asymmetric shape of the sanitaryware gives it the contemporary edge. ●●●





## Powder Room

The powder room is designed to impress. The homeowner says, “As this is a room mostly used by guests, I wanted it to be particularly nice. I usually prefer less bold designs, but when Dorothee showed me this design scheme I considered it to be quite striking and I liked it straight away.” The black tiles are Nero Marquinia marble and the golden tiles have a rich finish additionally enhanced by their textured surfaces. The vanity console and sink of the powder room were a bespoke piece. The tiles above the vanity console were supplied in a custom finish, especially created for this project to match the tiles on the opposite wall behind the loo. One of the key aspects for the bathroom lighting was to allow for downlights along the textured walls to really highlight the feature materials.

“I am particularly pleased with the dialogue between the texture of the materials and the light. The space for each bathroom was limited, nevertheless we managed to create functional and individual bathrooms with a distinctive character and atmosphere,” states Dorothee.

The homeowner says, “I do really like the final design and how every bathroom works as a pair with the related bedroom. All bathrooms are quite different, too.” He thinks for a while then add, “My property value did increase quite a bit and I keep getting compliments about my home.”

“My client is very happy with the kitchen and it all looks and works as desired. He just recently passed on to me a few nice comments the kitchen received from visiting friends,” she says proudly. What better accolade can a designer have? ●



### Details

Kitchen designed by Dorothee Junkin, director and lead designer Architecta Ltd  
**0794 230 1644 [www.architecta-interiors.com](http://www.architecta-interiors.com)**

American walnut bespoke kitchen and bathroom furniture manufactured by Paragon Furniture  
**020 8503 0199 [www.paragonfurniture.co.uk](http://www.paragonfurniture.co.uk)**

Gaggenau AW220-190 wall mounted hood, CG290-210 ceramic gas hob, B0220-111 oven, BM220-110 Microwave, RC462-200 Vario refrigerator, RF461-200 Vario freezer, CM210-110coffee machine, DF461-161 dishwasher **0844 892 8988 [www.gaggenau.co.uk](http://www.gaggenau.co.uk)**

Sub-Zero QR427G wine storage  
**020 8418 3800 [www.westye.co.uk](http://www.westye.co.uk)**

Carron Phoenix 105 Tetra undermount sink  
**01324 638 321 [www.carron.com](http://www.carron.com)**

Gessi Cucina Quadro Monobloc mixer tower tap  
**01785 811 836 [www.gessi.com](http://www.gessi.com)**

Miele W2859i WPM washing machine, T4859 Ci ss tumble dryer **0845 365 6600 [www.miele.co.uk](http://www.miele.co.uk)**

John Cullen Polestar and Mira lighting  
**020 7371 5400 [www.johncullenlighting.co.uk](http://www.johncullenlighting.co.uk)**

Geology Ltd Flamed Granite matt finish  
**020 7371 5400 [www.geologyltd.com](http://www.geologyltd.com)**

Pendant original BTC Titan 1 pendant Aluminium  
**01993 882 251 [www.originalbtc.com](http://www.originalbtc.com)**

Tom Dixon BLS02 beat feat pendant light black brass  
**020 7183 9732 [www.tomdixon.net](http://www.tomdixon.net)**

**Master bathroom**  
Falper Vetro glass basin  
**01279 771 159 [www.alchemyaward.com](http://www.alchemyaward.com)**

Bandini single lever waterfall tap  
**+39 (0) 558 313 398 [www.rbandini.it](http://www.rbandini.it)**

Laufen Form WC in Pergamon  
**01530 510 007 [www.laufen.co.uk](http://www.laufen.co.uk)**

John Cullen Waterlilly, Polesta, Mira lighting **020 7371 5400 [www.johncullenlighting.co.uk](http://www.johncullenlighting.co.uk)**

Livinghouse showerhead 270, 487 chrome, bespoke travertine shower tray, Berlin 464 shower screen **01722 415 000 [www.livinghouse.co.uk](http://www.livinghouse.co.uk)**

Salvatori Bamboo flat honed & ridged travertino Chiaro wall tiles , Bamboo Flat flooring tiles  
**+39 (0) 280 500 372 [www.salvatori.it](http://www.salvatori.it)**

**Second bathroom**  
Duravit Starck 3 single ended bath, Vero basin  
**0845 500 7787 [www.duravit.co.uk](http://www.duravit.co.uk)**

Hansgrohe Axor Citterio Crosshead bath & basin taps chrome, Citterio Uno showerhead  
**01372 465 655 [www.hansgrohe.co.uk](http://www.hansgrohe.co.uk)**

Flaminia Terra TR117 WC white  
**+39 (0) 761 542 030 [www.ceramicaflaminia.it](http://www.ceramicaflaminia.it)**

Trend Cristallo custom shading blend mosaic  
**+1 866 508 7363 [www.trend-vi.com](http://www.trend-vi.com)**

**Third bathroom**  
Laufen Alessi Dot basin and WC  
**01530 510 007 [www.laufen.co.uk](http://www.laufen.co.uk)**

C.P. Hart Flat 3pc basin mixer chrome  
**020 7902 1000 [www.cphart.co.uk](http://www.cphart.co.uk)**

Livinghouse Loft 270 showerhead chrome, 476 shower tray skinny black, shower screen 438  
**01722 415 000 [www.livinghouse.co.uk](http://www.livinghouse.co.uk)**

Salvatori Bamboo flat honed ridged Bianco Carrara marble **+39 (0) 280 500 372 [www.salvatori.it](http://www.salvatori.it)**

RIM Tile & Mosaic Boutique Ardesia ligure Naturale & 3D black, Stone Italiano Acciaio mosaic black  
**020 7376 5820 [www.rimdesign.co.uk](http://www.rimdesign.co.uk)**

**Powder room**  
Geology Ltd custom-made basin, vanity console  
**020 8469 4144 [www.geologyltd.com](http://www.geologyltd.com)**

Cisal Kawa black tap **+39 (0) 322 918 111 [www.cisal.it](http://www.cisal.it)**

Flaminia TR117 Terra black WC **+39 (0) 761 542 030 [www.ceramicaflaminia.it](http://www.ceramicaflaminia.it)**

Paragon Furniture custom-made matt black mirror  
**020 8503 0199 [www.paragonfurniture.co.uk](http://www.paragonfurniture.co.uk)**

Petra Antiqua wall tiles: Modul PixelPatch mosaic nero/gold, Nerom **+39 (0) 445 607 492 [www.petraantiqua.com](http://www.petraantiqua.com)**

Marquinia Antico Cerato, Art Collection Module 2 goldNero, Floor tiles Marquinia Antico Cerato  
**+35 124 339 1796 [www.negro-marquina.com](http://www.negro-marquina.com)**

### ADVICE FROM THE DESIGNER

“Mood, colours and materials can create a wonderful atmosphere, but if the shower pressure then does not meet the expectations one may quickly lose sight for the beauty of the design. It is helpful to get an expert involved to ensure all installations work as desired.”

Dorothee Junkin, director and lead designer Architecta