

KITCHEN

AND BATH IDEAS

More Baths Than Ever!

Easy Updates Amazing Results!

- > Refresh with Color
- > Add a Backsplash
- > Boost Storage

GET DESIGNER STYLE ON A BUDGET

+ Floor Plans for Family Kitchens

August 2002
On sale until August 2
\$4.99 U.S.



1118-0003-1118-0003

WET ROOM Floor-to-ceiling glass panels separate the wet room from the rest of the bath. Marble encases this area, which houses a luxurious shower and built-in tub. **DETAILS** A wide wooden drop elegantly frames the sleek material's side flares.

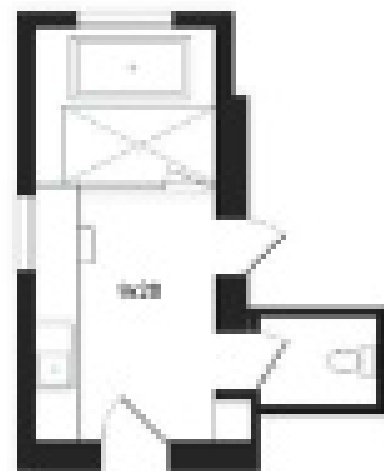




LADY LUXE

A separate master bath built just for her reveals glamorous details and sleek style.

writer BRENDA SNEY photographer EDWARD SELL field editor LAURA HILL



LET'S FACE IT:

A bathroom needs privacy. And no bathroom is more private than one that's yours and yours alone. So when these Los Angeles homeowners added on to their space Spanish Colonial-style home, they repurposed the existing master bathroom as a spacious closet and used the new space to create twin master baths, one for each of them.

In the wife's space, designer Kristine Paige Kamenstein filled the blank canvas with a clean-lined, sophisticated, organized design. "Our job was to create a well-appointed, contemporary space," Kamenstein says. "Our client wanted a soaking tub, a large steam shower, a vanity area, a separate water closet room, and an entrance to her closet. We wanted to house all of these amenities within a beautifully designed and well-planned space."

Done, and done. Kamenstein created storage that is all but invisible to the naked eye, yet abundant and convenient. Touch-latch cabinetry, free of hardware, upholds the streamlined design. Lighted interiors in the wall cabinets and drawers make everything easy to find. The drawers are also loaded with additional features, including dividers and electrical outlets for hair appliances.

The aspect Kamenstein is most proud of is the wet room. "Due to the galley-like space, we had difficulty fitting in all the amenities our client desired. The wet room houses a therapeutic tub with mood lighting, rainwater/body spray shower, and a steam room area," she says. "All of the 'wet' areas are safe behind the glass walls, which enabled us to use walnut flooring to create a warmer feeling than a stone floor."

The materials are indulgent—but not overly ornate. The balanced design remains light and airy, while the wood floor adds warmth. Together it all adds up to luxurious harmony—fit for a lady. ■■■

Photo: © Kristine Paige Kamenstein

Takeaways

- 1** Recessing cabinets into the wall creates discreet storage.
- 2** Frosted glass and high window placement let in natural light without compromising privacy.
- 3** Draping the tub and shower in a wet area saves space.
- 4** A lighter stone sink and sleek cabinetry offer a contemporary look.

DESIGNER: The marble top of the makeup vanity continues seamlessly along the side wall and into the shower. **DETAILS:** The tub. Above the custom marble sink, a polished nickel mirror faucet adds sparkle. **ACCESSORIES:** A metal door backed with a mirror keeps the toilet and privacy. **FINISHES:** Lighted cabinet interiors make finding items easier. **TEXTILES:** Body sprays, a rain-style showerhead, and a custom shower area luxury. **PLUMBING:** Custom fixtures hold grooming products within arm's reach.