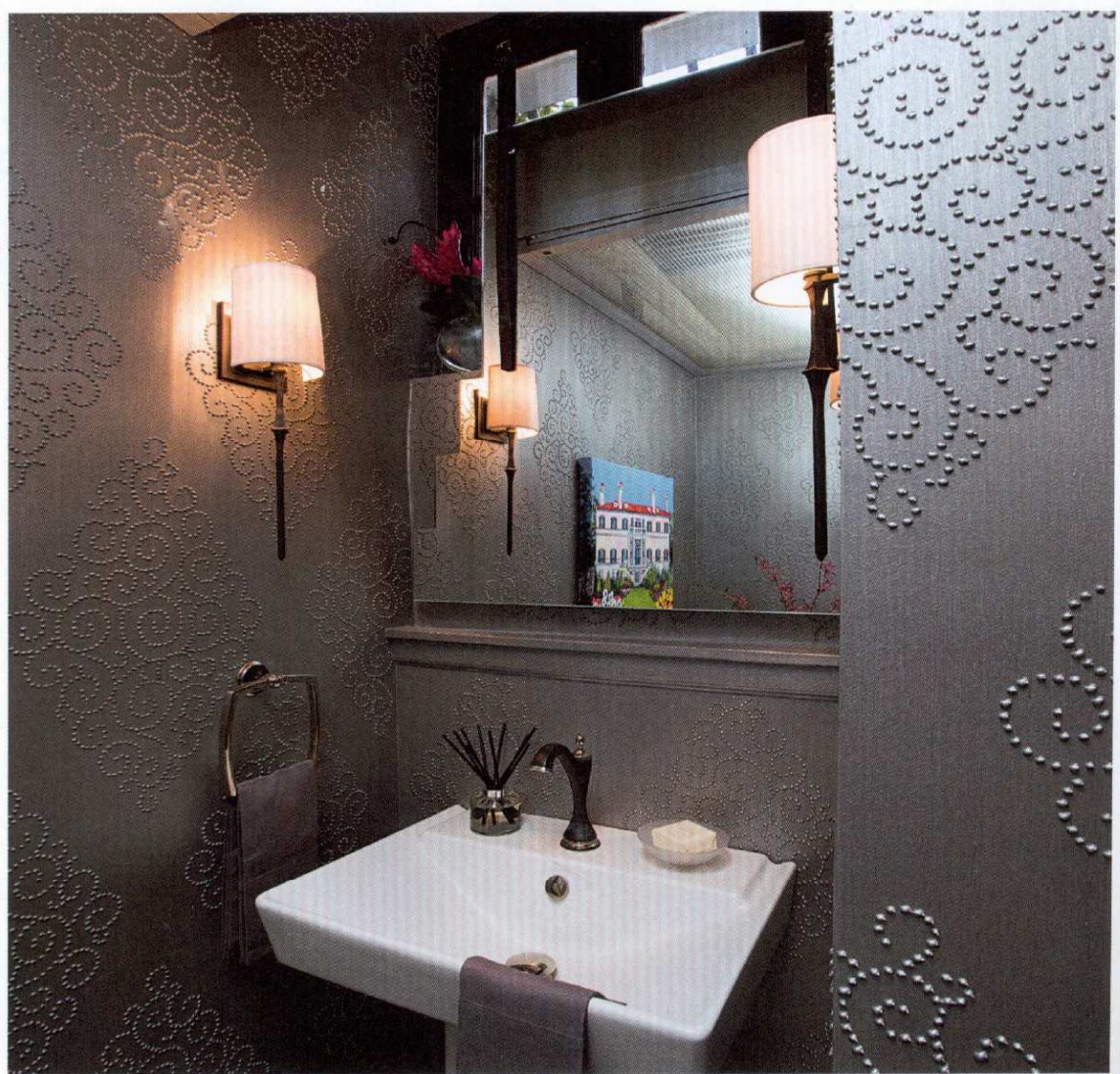


**Interior designer:** Susan Brunstrum ASID, IFDA, Sweet Peas Design (Libertyville, IL); design team – sBeth Kweton, Jennifer Tarello, Rebecca Snow, Tod Snyder-Grube  
**Builder:** North Shore Improvements and Renovations, Inc  
**Wallcoverings:** Specialty painting by Nancy Schnell of Fairy Dust Creations  
**Pedestal sink and toilet:** Kohler from Ferguson  
**Faucets:** Charlotte Collection in Cocoa Bronze and Polished Nickel by Brizo from Ferguson  
**Flooring:** Design Materials  
**Lighting:** Visual Comfort  
**Accessories:** Artwork by Kathy Chambers; acrylic sofa table by Scott Yerkey; Christopher Guy ottomans  
**Stepped metal ceiling:** Firestone silver metallic from Sheet Metal Supply

**Story by** Charles Moxham  
**Photography by** Jerry Kalyniuk



# Artistic homage

This meticulously reinvented powder room nods to the bold eclecticism favored by the original architect and designer

**These pages:** The clean lines of a pedestal sink and mirror coordinate with the diamond motif on the walls and ceiling in this powder room by interior designer Susan Brunstrum and her team from Sweet Peas Design. The curved faucet and scrolled feet on the ottomans reference the swirls on the hand-painted walls. A circular table lamp and white spine sculpture by Leora Brecher add a note of restrained modernism.

**A renovation project in a house by a noted architect and designer** brings an opportunity to reinterpret their motifs in the new design.

When reworking this powder room in a home by noted architect David Adler, interior designer Susan Brunstrum of Sweet Peas Design says she was inspired by Adler's love of eclecticism.

"Geometric themes play a unifying role in this design. I repeated the diamond pattern Adler used on the hand-planked door on the metallic, multi-level ceiling which hides the many pipes and varying ceiling heights."

The diamond motif can be seen again on

the walls, in a scrollwork pattern Brunstrum adapted from a vintage design.

"The walls were too uneven for wallpaper, so we stenciled the pattern onto a shimmering hand-painted background. Finally, 133,000 paint dots were applied individually by syringe!"

Other features of the space include pop-art portraits of the original architect and his sister, interior designer Frances Elkins.

[save](#) | [share](#) | [images](#)



Search 42597 at  
[my.trendsideas.com](http://my.trendsideas.com)



