

Dunn & Tighe inspire with a blend of modern and classic

 [meridameridian.com /blog/dunn-tighe-inspire-with-a-blend-of-modern-and-classic/](https://meridameridian.com/blog/dunn-tighe-inspire-with-a-blend-of-modern-and-classic/)

Several top designers were asked to give their take on a creative use for patterns from our new [Tailormade collection](#). [Dunn & Tighe Interiors](#) of Bronxville, New York envisioned a refined Great Room space that mixes a neutral palette with pops of color.



DUNN & TIGHE

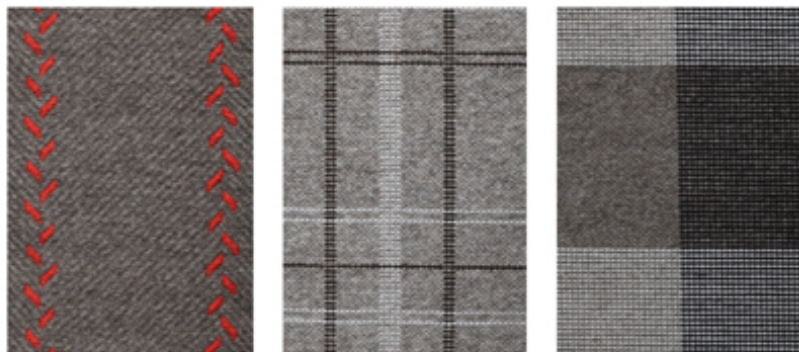
INTERIORS

Working with clients on a historic 19th century home in Connecticut, Dunn & Tighe Interiors infused the Great Room with sophisticated and masculine qualities, fueled and inspired by Merida's Tailormade collection's vision of what it means to be *both* modern and classic.





"The great room came to life with the Tailormade collection. The massive space incorporated three patterns from the collection: a runner in *Flint*, main area rug in *Slater*, and a games area rug in *Foster*. All three patterns spoke to one another, while having a personality all their own"





"Imbued with masculine detail and interplay of texture, the great room takes on a relaxed and inviting character."

Merida: How does this reflect your unique style, and the style of the client? Can you see [Tailormade](#) in other types of designs?

Dunn & Tighe: With a design philosophy resulting in sophisticated, elegant environments infused with warmth and ease, we blended our appreciation of contemporary in a minimalist manner along with the simplicity and elegance of classic designs. The result is an interplay of form and function that enlivens a room revealing the client's personality.

These aesthetics lend themselves beautifully to the [Tailormade](#) collection, which is both versatile and unique. The undyed wool are rich, textural, and dynamic – which we feel is a great starting point in building a room.

[Explore the Tailormade collection>](#)

[Visit Dunn & Tighe Interiors>](#)