

# ATLANTA HOMES<sup>TM</sup> & LIFESTYLES

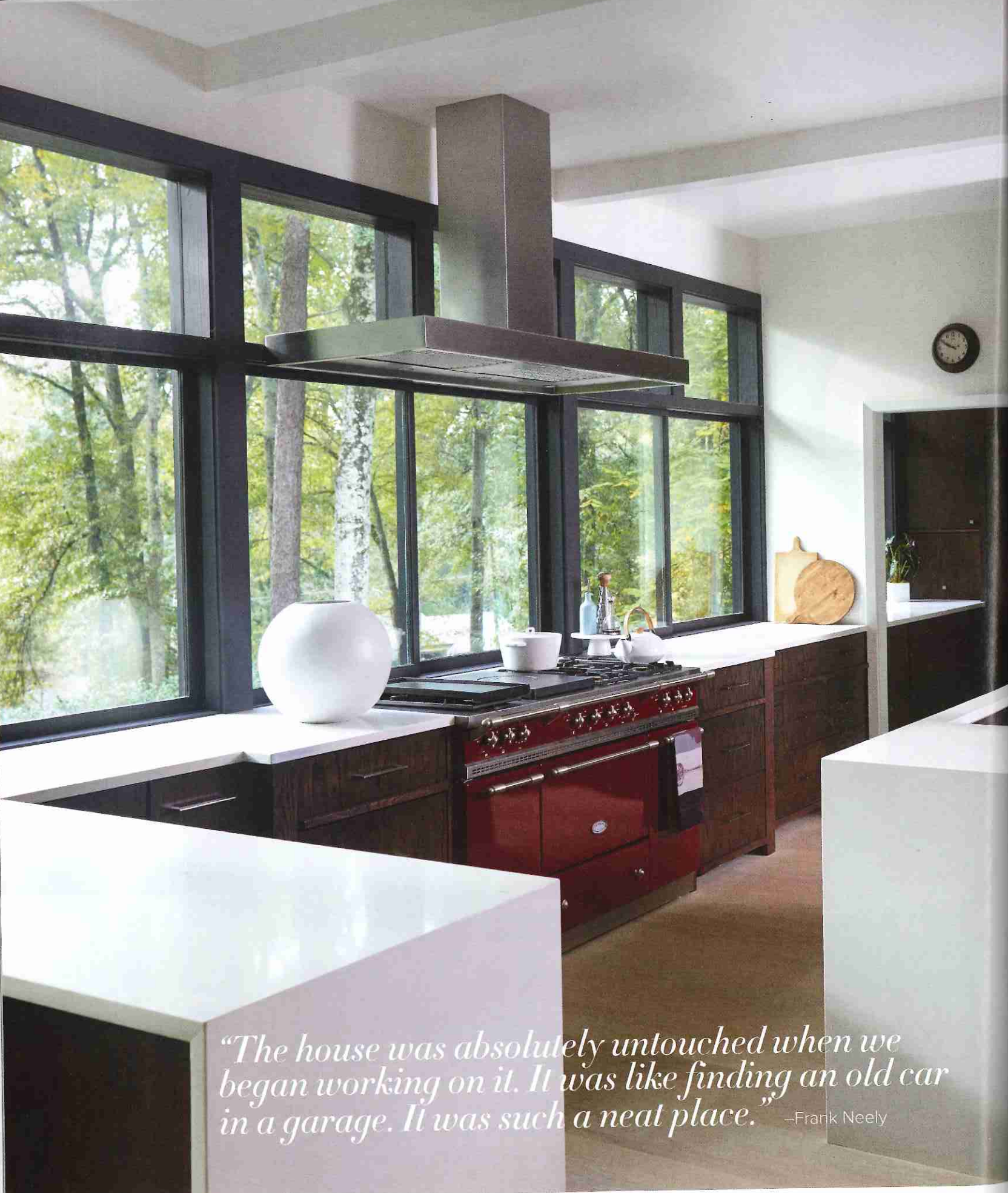
30 BEST of the BEST  
KITCHENS

JANUARY 2014  
ATLANTAHOMESMAG.COM

\$4.95US



*plus: all the  
comforts of home*



*"The house was absolutely untouched when we began working on it. It was like finding an old car in a garage. It was such a neat place."* —Frank Neely

GRAND PRIZE  
WINNER

# Back to the Future

*A classic midcentury residence receives a faithful renovation complete with today's conveniences*

Written by Kate Abney

Styled by Ginny Branch

Photographed by David Christensen

This Buckhead gem was the work of noted midcentury architect Andrew Steiner, and it remained unspoiled by renovations in the decades before it was acquired by this creative family of five. Architect Frank Neely took great pains with its redesign, improving flow and functionality while carefully preserving Steiner's masterful precedent. That included revamping the dated kitchen and public spaces at the heart of the home, an area he transformed by eliminating walls to create an open cooking and entertaining space.

Along the perimeter, an expanse of cabinetry is topped by sliding stained-oak windows that overlook a lush front yard; a deceptively simple vent hood all but disappears against the picturesque views. Here, Neely also installed a four-inch step to set off the custom Lacanche range and coordinate with a Caesarstone island of the same width. Tailor-made with a waterfall edge, it takes on the appearance of a Parsons table floating mid-room.

In the ceiling above, Neely's telltale shadow lines are placed on the same axis as the appliance-concealing cabinetry, helping to delineate the adjoining rooms while maintaining visual flow—an effect that milk-washed oak floors selected by interior designer Amy D. Morris enhance beautifully.

“We originally wanted light cabinets and dark floors but Amy inverted it, and I think it was a brilliant call,” says Neely. Beyond Morris's choices for colors, textures and furnishings, her pick for pendants really made the space, explains Neely. “Even with all we did in this kitchen, when you walk in the room and see those light fixtures, they absolutely knock it out of the park,” he says. “In a contemporary kitchen, God is in the details. And here, every detail counts.”



**DESIGN DETAILS**

FRANK G. NEELY DESIGN INC.  
FRANK NEELY  
AND ASSOCIATE  
CHRISTIAN REED

AMY D. MORRIS INTERIORS  
AMY D. MORRIS

CONTRACTOR  
SCULAC HOMES INC.  
JIM SCULAC

## Resources

CABINETS Ashworth Cottage Kitchens RANGE Lacanche VENT HOOD Custom fabricated by Handcrafted Metal Inc. FAUCET Dornbracht through Ferguson Enterprises COUNTERTOPS Caesarstone through Stone Solutions of Atlanta LIGHTING Haute Living DISHWASHER Miele through Guy T. Gunter & Associates SINK Blanco through Ferguson Enterprises REFRIGERATORS Sub-Zero through Carpets of Dalton COUNTER STOOLS Arborline through J. Persing FLOORS Wyatt Childs WINDOWS Custom fabricated by Century Woodwork Inc. HARDWARE Restoration Hardware ISLAND FAUCET Rohl, PDI Plumbing CLEANUP SINK FAUCET Kohler, PDI Plumbing





14



15



19



16



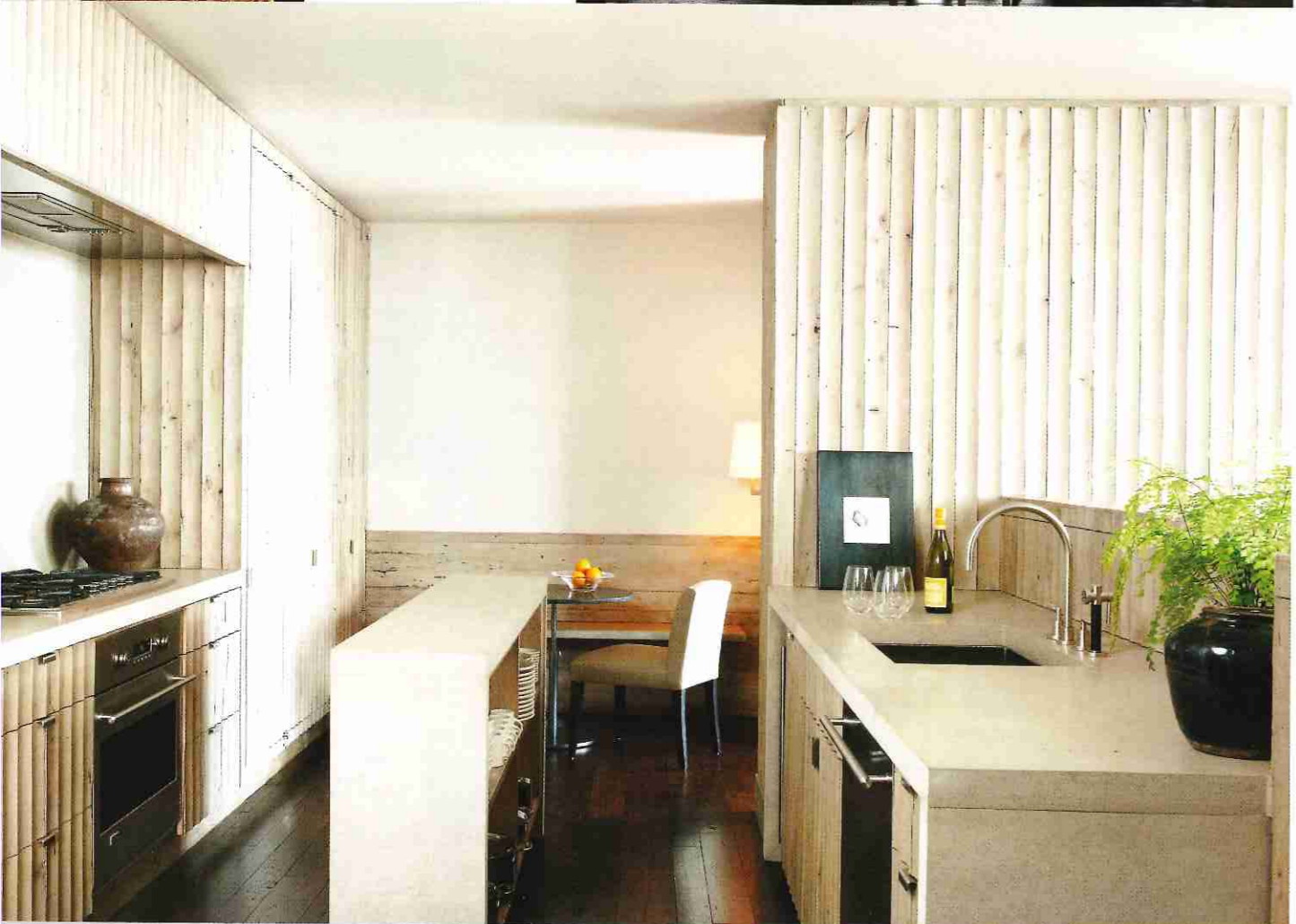
17



18



20



14. AN INTEGRATED HOOD AND A RECESSED NICHE ON THE BACKSPLASH REVEAL DIVINE DETAILING. 15. CABINETS PAINTED IN FARROW & BALL'S PIGEON FRESHEN UP A NEUTRAL PALETTE. 16. A LADDER ADDS AN ELEMENT OF MOVEMENT AND APPROACHABILITY. 17. A FRENCH LA CORNUE RANGE ACTS LIKE A WORK OF ART. 18. A CONCRETE-TOPPED ISLAND IS FLANKED BY LEATHER-CLAD BENCHES AND MCALPINE HOME FOR MACRAE DESIGNS STOOLS. 19. WOOD-PANELED WALLS, SUBMARINE LIGHTS AND AN IRON WINDOW PLAY UP RICH TEXTURES. 20. DELICATE LATTICE DETAILING ON WALL CABINETS ADDS AN AIRY TOUCH. 21. BLEACHED OAK AND CROSS-CUT LIMESTONE GIVE THIS SPACE A MODERN LIGHTNESS. 22. A TORCH-STYLE CHANDELIER AND WATERCOLOR EGG PRINTS ADD A DOSE OF HIGH-STYLE. 23. A PECKY CYPRESS CEILING IS A NICE FOIL TO TALL, SLEEK CABINETS IN A BETH BARFIELD-DESIGNED KITCHEN. 24. STRIATED MARBLE COUNTERTOPS AND SMOKED GLASS DOORS THAT CONCEAL STORAGE AND SLIDE BEHIND THE HOOD ARE STYLE SECRETS IN MATTHEW QUINN AND RIC PARRISH'S MIDTOWN PENTHOUSE. 25. A LOWERED CEILING ABOVE THE KITCHEN KEEPS IT FROM FEELING VOLUMETRIC.



22



23



24



25