

NKBA

INNOVATION+ INSPIRATION

THE OFFICIAL PUBLICATION OF THE NATIONAL KITCHEN + BATH ASSOCIATION



2017 NKBA DESIGN AWARDS

KITCHEN & BATH TRENDS
KBIS PRODUCTS PREVIEW
SOAKING TUBS

JANUARY + FEBRUARY 2017 / WWW.NKBA.ORG

Honorable Mention / Large Kitchen



PHOTO: BERNARD ANDRE



Leslie Lamarre, CKD, CID
J. Michael McGinn
TRG Architecture + Interior Design
San Mateo, Calif.

Open & Airy

The designers transformed this small kitchen into a large space with an open plan that is better scaled to the 14-foot ceilings. A unique back-to-back sink layout with double dishwashers facilitates cleanup, and small appliances are stashed behind a servo-drive cabinet door beneath the microwave. The design team converted a storage room into a mudroom and furred out walls around cabinets for a minimalist look, eliminated a 2-foot ceiling change, and suspended ceilings over each island to add dimension.

Honorable Mention / Large Kitchen



Gladys Schanstra, CKBD, Allied ASID
Schanstra Interior Design
Melrose Park, Ill.

Marble Magic

Designer Gladys Schanstra's clients were building a modern Mies van der Rohe-style home in the suburbs and desired a kitchen that would hold the main floor together. Because the clients wanted an open-yet-defined floor plan, the designer anchored the space with a large marble-topped main island and took the freezer/refrigerator wall to the ceiling to increase storage. Tip-on mechanisms eliminate cabinet pulls, while servo-drive lifts open and close doors automatically with the touch of a button. Special features include radiant floor heat and a metallic silver leaf backsplash.



PHOTO: ERIC HAUSMAN PHOTOGRAPHY

Honorable Mention / Medium Kitchen



PHOTO: ROB KAROSIS



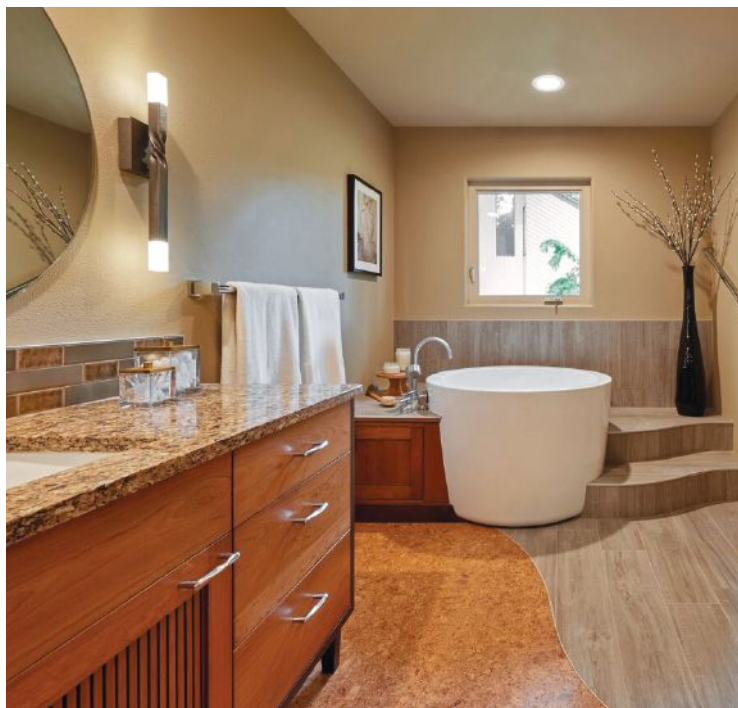
Janice J. Page, CKD, Allied ASID
Rebecca Dillman
PKsurroundings
Exeter, N.H.

Old World European

To fulfill the clients' wishes for British and French charm, designers Janice J. Page and Rebecca Dillman turned to rich materials, including four custom cabinet finishes: a rustic cherry with a warm mushroom stain and rub-through; quarter-sawn oak with a deep walnut stain; a gray stain with white glazing; and a light gray paint. An island countertop in antique chestnut, quartzite countertops with green and blue undertones, and bronze hardware complete the look. In lieu of a traditional table, the clients requested cozy seating options, which translated into stools at the island and leather pub chairs around a fireplace and café table.

Second Place / Large Bathroom

PHOTO: NW ARCHITECTURAL PHOTOGRAPHY



Robin R. Fisher, CMKBD, CAPS
Brandon Cole
Mary Culbertson, AKBD
Robin Rigby Fisher Design
Portland, Ore.

Asian Flavor

The elements water, earth, and air influenced the design for this Asian-inspired master bath.

The walk-in shower is lined with limestone-like porcelain and accented with glass tile to represent bamboo, while the sliced rocks line the shower pan to create a sense of a riverbed. Coming out of the shower, the homeowner steps on porcelain wood-look tile that gently curves and draws attention to a Japanese ofuro tub, which is the focal point of the space. Cork meets the tile as it winds along the floor and continues into the hall, closet, and master bedroom.

Both the vanity and storage in the hall were designed to emulate a Japanese tansu cabinet. Espresso wood legs accent the cherry cabinets, while the tile backsplash in soft greens and blues represents the air.

Third Place / Large Bathroom



Leslie Lamarre,
CKD, CID
J. Michael McGinn
TRG Architecture +
Interior Design
San Mateo, Calif.

Chaos Into Calm

The objectives for this bathroom were simple: Transform a chaotic space into something masculine and contemporary, and create a closet with 100 lineal feet of hanging space and enough room for 200 pairs of shoes.

The designer chose a black marble slab and freestanding tub to anchor the room and used contrasting white marble tile to cover the wet walls. A crystal chandelier mimics rainfall and creates a sense of tranquility, the designer says.



PHOTO: BERNARD ANDRE

Second Place / Small Bathroom

PHOTO: BERNARD ANDRE



Leslie Lamarre, CKD, CID
Erika Shjeflo, CID
TRG Architecture + Interior Design
San Mateo, Calif.

Warm & Woodsy

To create a guest bathroom that flows with the contemporary style of the house and also highlights the surrounding woods, designer Leslie Lamarre began with a limestone mosaic stripe that starts at the doorway, bringing energy into the room and drawing the eye up the window wall. The soft-toned, wood-grain-patterned porcelain floor tile, dark cabinet face, brown marble slab, and serene gray limestone shower tile combine for a modern feel that emulates natural elements and blends well with views. Stained mahogany windows and textured, gray-toned roller shades further evoke the outdoors.

Third Place / Small Bathroom



Leslie Lamarre, CKD, CID
Erika Shjeflo, CID
TRG Architecture + Interior Design
San Mateo, Calif.

Traditional With a Twist

The first step in transforming this second-floor guest bath was balancing dueling homeowner wishes: the husband wanted a hip, modern space while the wife leaned traditional. Playing off of the home's Tudor style, the designer went a traditional route, with a washstand-style vanity, a diamond-and-dot floor mosaic, and ceramic beadboard wainscoting. Still, she was able to infuse the husband's tastes by incorporating a vanishing tile-in drain, zero-overhang mitered shower curb and bench, and a simple-yet-impactful brown marble liner just below the chair rail. Critical to achieving the clean look was finding a ceramic wainscot long enough to avoid horizontal grout lines. A recessed medicine cabinet provides hidden storage in addition to the vanity's drawers and open shelf.



PHOTO: BERNARD ANDRE

Second Place / Powder Room

PHOTO: BERNARD ANDRE



Leslie Lamarre, CKD, CID
TRG Architecture +
Interior Design
San Mateo, Calif.

Dramatic Intrigue

To transform a dreary, shaft-like powder room into a stylish, pampering space, designer Leslie Lamarre began by lengthening the room into an adjacent coat closet and lowering the ceiling from 142 inches to 120 inches. Tying into the slate-roofed home's traditional architecture, the designer selected classic gray marble flooring, coordinating baseboard, and a handsome stone-and-glass inset border that inspired the custom steel handles she designed for the bespoke vanity. The vanity and vessel sink are intentionally hefty for an air of masculinity, a feeling echoed in the metallic grasscloth that covers three walls. Adding allure and intrigue is a wall of floor-to-ceiling antique mirrored tile, which effectively extends the space. Finally, a glass "drizzle" chandelier casts dramatic shadows for additional flair.

Third Place / Powder Room



Lori Carroll
Guillermo Bazua
Lori Carroll & Associates
Tucson, Ariz.

Infused With Texture

The homeowners asked for a daring design for their powder room, but without a saturated color scheme or flashy décor. Drawing inspiration from an urban loft, the designer captured a metropolitan vibe through the use of concrete and steel—but with a twist. On the curved vanity wall, composite tiles installed on a slanted pattern play off the light and shadows inside the space. The wedge overlay effect establishes a focal point but also softens the overall appearance of the bathroom. Applying a combed plaster finish on adjacent walls further enhances the primitive nature of cement. As a transition between the shingled tile layout and striated wall treatment, the contemporary vanity is angled and open, with a modest white vessel sink, sophisticated faucet, and cast-glass pendants. Torch-cut steel wraps around the corner of the toilet alcove, keeping to the edgy theme while its burnished metal adds a touch of warmth.



PHOTO: JON MANCUSO

Honorable Mention / Large Bathroom

BEST
BEFORE
+ AFTER
BATH

PHOTO: AMY GALEA
PHOTOGRAPHY

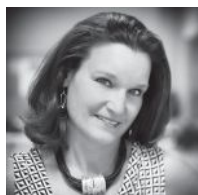


Andrea Lupo
Lupo Interiors, LLC
Rochester Hills, Mich.

International Inspiration

Designer Andrea Lupo wanted to create a space that was functional, spa-like, and incorporated works of art that the clients collected from their travels around the world. Lupo reorganized the space to be open and used custom cabinetry to create partitions, display artwork, and allow for storage. She made a wall-hung sculpture the focal point of the room, raised the headers, and reworked the vaulted ceiling to a barrel shape, enhancing the arched window and creating a space for light fixtures. A spa-like shower for two offers aromatherapy, chromatherapy, and multiple showerheads and body sprays.

Honorable Mention / Large Bathroom



Leslie Lamarre, CKD, CID
Erika Shjeflo, CID
TRG Architecture + Interior Design
San Mateo, Calif.

Transitional Tones

The clients for this home asked Leslie Lamarre to update the master bath with transitional elements, including two vanities, a make-up area, and a separate toilet room. Lamarre and co-designer Erika Shjeflo specified custom cabinets to provide symmetry and added a freestanding tub. Cabinets feature a towel warmer and a storage compartment for extra linens, toiletries, and display items. A steam shower adds a nice touch.



PHOTO: BERNARD ANDRE

Honorable Mention / Small Bathroom

PHOTO: JOHN WILBANKS



Gail Monica Dent
Provanti Designs, Inc.
Redmond, Wash.

Vertically Visual

To freshen up a cramped, dated, windowless three-quarter guest bathroom without enlarging the footprint, designer Gail Monica Dent focused on material selections that created a larger presence. Shimmering, vertical-grain floor-to-ceiling wall tile anchors the design, with contrasting colors to add dimension and differentiation. The textured, vertical-grain laminate of the floating vanity coordinates with the walls. A waterfall trough sink adds visual interest, while the single-control faucet is sleek and simple. The curved shower enlarges the bathing space while offering a subtle contrast to the straight lines in the rest of the room.

Honorable Mention / Small Bathroom



PHOTO: STACY GILLESPIE



Courtney J. Seavall
CJ Seavall Design, LLC
Longmont, Colo.

Masculine Retreat

For his small, outdated bathroom, the client sought to update finishes and fixtures without changing the existing floor plan. Designer Courtney J. Seavall created a relaxing atmosphere while maintaining a sense of masculinity by updating the walls to 12-inch-by-24-inch tile with slight color striations, laid in a vertical running bond course and accented by mixed-media mosaic tile. A larger, modern tub features a linear satin nickel drain, custom built-in bench seating and storage niche, and expansive glass sliding doors. A new cabinet with a Shaker-style door anchors the room, and an undermount rectangular sink, quartz countertop, and waterfall faucet add to the spa-like feel.

Honorable Mention / Powder Room



Leslie Lamarre, CKD, CID
Erika Shjeflo, CID
TRG Architecture + Interior Design
San Mateo, Calif.

Inviting Interior

Leslie Lamarre's clients wanted a powder room that was welcoming and bright, contemporary but not cold. The design centers on a floating concrete countertop with integral trough sink. Floor-to-ceiling 3-D limestone backsplash tile, highlighted by accent lighting, offers a tactile element that brings warmth to the space. The combination of a single, narrow base cabinet and a side-facing full-height unit fulfilled the clients' wish for hidden and open storage options without overwhelming the room with cabinetry. Finally, a 34-inch opening, knee space below the vanity, and room for a T-shaped wheelchair turn accommodate elderly guests.



PHOTO: BERNARD ANDRE

Honorable Mention / Powder Room



PHOTO: JOHN MAGNOSKI



Jaque Bethke
Pure Design Environments
Eden Prairie, Minn.

Bejeweled Beauty

As part of a transformation of offices into a penthouse suite, designer Jaque Bethke faced a challenge: how to design a powder room that opens directly into an entertaining area. She seized the opportunity to be dramatic. The vanity wall faces out to the public space, presenting contrasting and deep color tones like the bottom of the ocean, a bold look that catches the eye while reflecting the owners' love of yachting. Mirrors etched with the wall-covering pattern provide visual interest, and the careful placement of lights imbues visitors with a sense of calm as they approach.