




VIBRANT DESIGN
Amy Lau incorporated
this chandelier with
tiers of mouth-blown
glass medallions in
the foyer by Italian
designer Vistosi into
a luxury Central Park
condo. vistosi.it

energy-infused ELEGANCE

FROM FURNITURE TO FINISHES, AMY LAU
DESIGN PROVIDES A CURATORIAL EYE AND
AN ARTISTIC APPROACH TO EACH PROJECT

BY JULIE EDWARDS



"I APPROACH EACH
PROJECT LIKE A
CONNOISSEUR,
INTENT ON FINDING
THE PERFECT PIECES,
EVEN IF I HAVE TO
CREATE THEM."

AMY LAU, OWNER & PRINCIPAL

VINTAGE STYLE

Lau outfitted this condo with unique touches, like this cabinet by Phillip Lloyd Powell that features hand-carved doors; vintage barware on a Kimcherova Italian walnut-wood cart (kimcherova.com); a rare "Lady" armchair by designer Marco Zanuso for Arflex (arflex.it); and sconces by Gio Ponti circa the 1960s.

AMY LAU ON THE CENTRAL PARK WEST LUXURY CONDO:

"In the dining room I deconstructed a glass curtain, and created a custom unexpected art installation. Details like these added to the overall ambience and drama of the space."

INTERNATIONAL INTERIORS
The dining room features five Jacques Guillon cord chairs from Avenue Road (avenue-road.com) and a custom Italian chandelier. Lau's wall installation was created from 196 interlacing Italian glass tiles in a range of natural sea hues.

It only takes a few minutes of conversing with Amy Lau, owner and principal of Amy Lau Design, to be impressed with her endless energy and palatable passion for design. In viewing her work, it's even easier to be impressed by her wide-ranging talent—her projects are varied in look yet all express her attention to detail and eye for the unique.

"My personal design philosophy is centered on curating rather than designing," Lau says. "I evaluate each object on its merit and how it contributes to the design, from its scale and proportion to its texture and color. There is a purpose for everything in each space I design so that the finished product is always original and personalized."

Lau says her passion for art and design was fueled during weekend visits with her grandmother, an artist and naturalist. "Her home was like a design lab filled with drawing books, paintings and elements collected from the landscape," she notes. Lau's curatorial eye and artistic focus was further honed via frequent trips to galleries and museums with her father, a dedicated collector of material culture, and her training at the esteemed Sotheby's graduate program in New York.

Central Park West Luxury Condo

Designed for an entrepreneur, this 3,000-square-foot, three-bedroom apartment overlooking Central Park challenged Lau with its timeline—the owner requested it be completed in three months. Lau rose to the challenge, creating a warm, open environment conducive to entertaining while maximizing the views of the city.

The finished space mixes vintage, couture, and contemporary pieces with rich color and texture. Lau's design features numerous standout pieces, including a chandelier with tiers of mouth-blown glass medallions in the foyer by Italian designer Vistosi (vistosi.it); a beautiful vintage Vladimir Kagan sofa (vladimirkagan.com); and a Phillip Lloyd Powell coffee table in the living area. The end result so impressed the client that he has, since its completion, commissioned Lau for three additional design projects.



TIMELESS LIVING SPACE
This Lau-designed home features a Finn Juhl "45" lounge chair circa 1945, and a Triennale standing lamp by Arredoluce circa 1952.



FASHIONABLE KITCHEN
Lau incorporated bar stools by designer Erik Buck into the lake house.

Kent Lake House

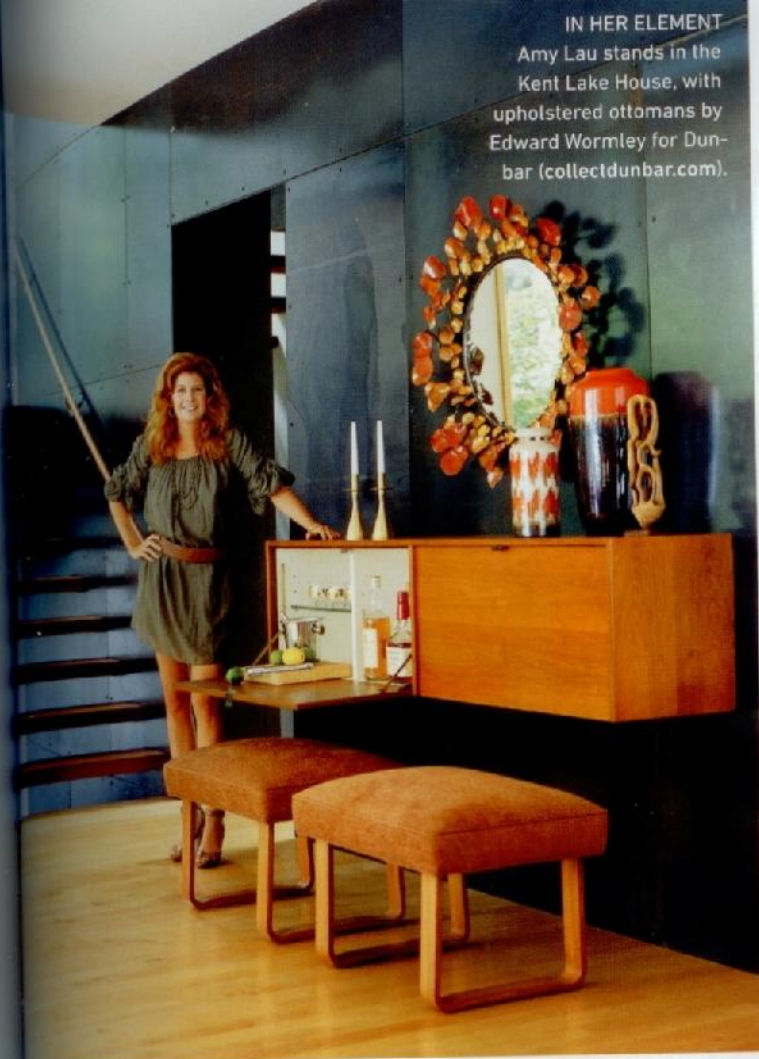
Constructed on a dramatically sloped wooded lot overlooking Sagamore Lake in Kent, New York, this 2,400-square-foot home provides a weekend escape for its Manhattan-based owners. Lau's finished design melds beautifully with the contemporary yet classic architectural design by Resolution 4 Architecture (re4a.com). Her inspiration came from the home's setting and is reflected in her use of warm, earthy colors and natural finishes that mirror the surrounding landscape, including hardwood floors throughout the home. However, Lau's custom touch was "a handcrafted twig fire screen composed of hand-bent rods, exemplifying the organic lines of trees," she says.

An Arizona native, Lau founded her Manhattan-based firm in 2001, in the West Chelsea arts district. Since its inception, the firm has attracted prestigious residential and commercial clients while Lau has been lauded as "a young designer to watch" in numerous trade periodicals and featured in multiple design and decor magazines, including *LUXE*, *Metropolitan Home*, *Elle Decor*, *New York Spaces*, *Gotham*, *Interior Design*, and *House & Garden*.

As far as her design style, Lau says it continuously changes. "I have a design lab in my head—I am constantly pulling references from things I have seen or experienced in history and in nature," she says. "I feed my mental design file by attending as many art shows as I can find, both locally and around the world."

Of course, Lau's work is driven by the interests of her clients, and her work's signature is creating a special "heirloom piece"

IN HER ELEMENT
Amy Lau stands in the
Kent Lake House, with
upholstered ottomans by
Edward Wormley for Dun-
bar (collectdunbar.com).



AMY LAU ON THE KENT HOUSE:

"On a walk around the property is where I found my inspiration for this space. The natural surroundings and the colors of fall are seen throughout this living room."



[ENERGY-INFUSED ELEGANCE]

BEDROOM EYES

The bedroom features a 1950s Planner Group chest of drawers and a headboard by Paul McCobb.



UNIQUE PIECES

The home also features walnut Wishbone chairs by Hans Wegner for Carl Hansen & Son (carlhansen.com) and a 1950s Danish dining table.

