

# ATLANTA HOMES™ & LIFESTYLES

*The Good Life*



AUGUST 2011  
ATLANTAHOMESMAG.COM

\$4.95US 08>



0 09281 03342 4



The Cashiers Historical Society Presents the 14th Annual

# *Cashiers Designer Showhouse*™

## *"Reflections"*



AUGUST 20 – SEPTEMBER 4, 2011



# History of "Reflections"

Enjoying elevations of up to 4160 feet, with rolling pastures and grassy lawns, "Reflections" is a nature lover's paradise. The home is just four miles from the town center, yet it rests in a serene, secluded world of its own: a beautiful 42-acre sanctuary that adjoins 600 additional acres of conservation land, ensuring its privacy and natural grandeur will remain unspoiled for years to come.

The home is a true Southern masterpiece, created from logs reclaimed from 1930s Tennessee Valley Authority construction sites. The beams for the main house came from old Tennessee barns and cabins flooded during the building of the Chickamauga Dam and Lake. The beams are poplar and are about 180 years old.

The main building was built in 1967 by Eunice and Rupert Colemore of Lookout Mountain, Tennessee. The Colemores added the end wing in 1971. It was an original log cabin that was dismantled and rebuilt with each beam numbered. The screened-in porch was formerly open-air and was called a "dog run" in these houses. The current music room and library are the original two rooms of the cabin with sleeping quarters above.

Kate and Mitchell Watson purchased the home in the fall of 1993 and completely renovated the property while still keeping the warmth and charm of the logs. The estate's outbuildings include a two-car carport, an upper barn, a lower barn and a pond pavilion. The pavilion is a charming spot to take in the splendor of the surroundings, and terraced perennial gardens provide a colorful accent to the lush setting. This tranquil oasis is beautifully graced by a lake, dock, three ponds and numerous walking trails. The Watsons call their mountain and this property "home" and are grateful to those who came before them for what they accomplished.



LAKESIDE DOCK



ORIGINAL ART BY JANE SMITHERS TO BE AUCTIONED OFF AT PATRONS PARTY

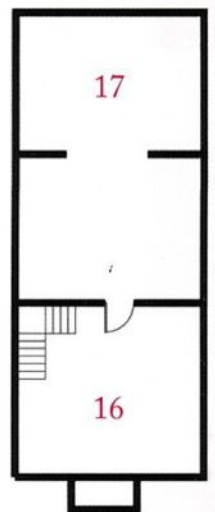
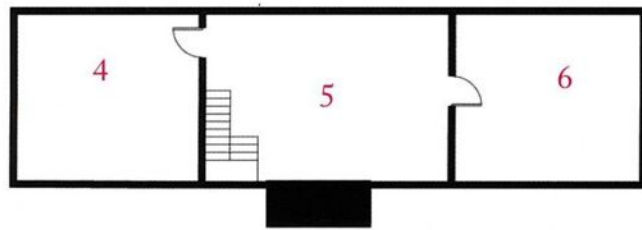


UPPER BARN

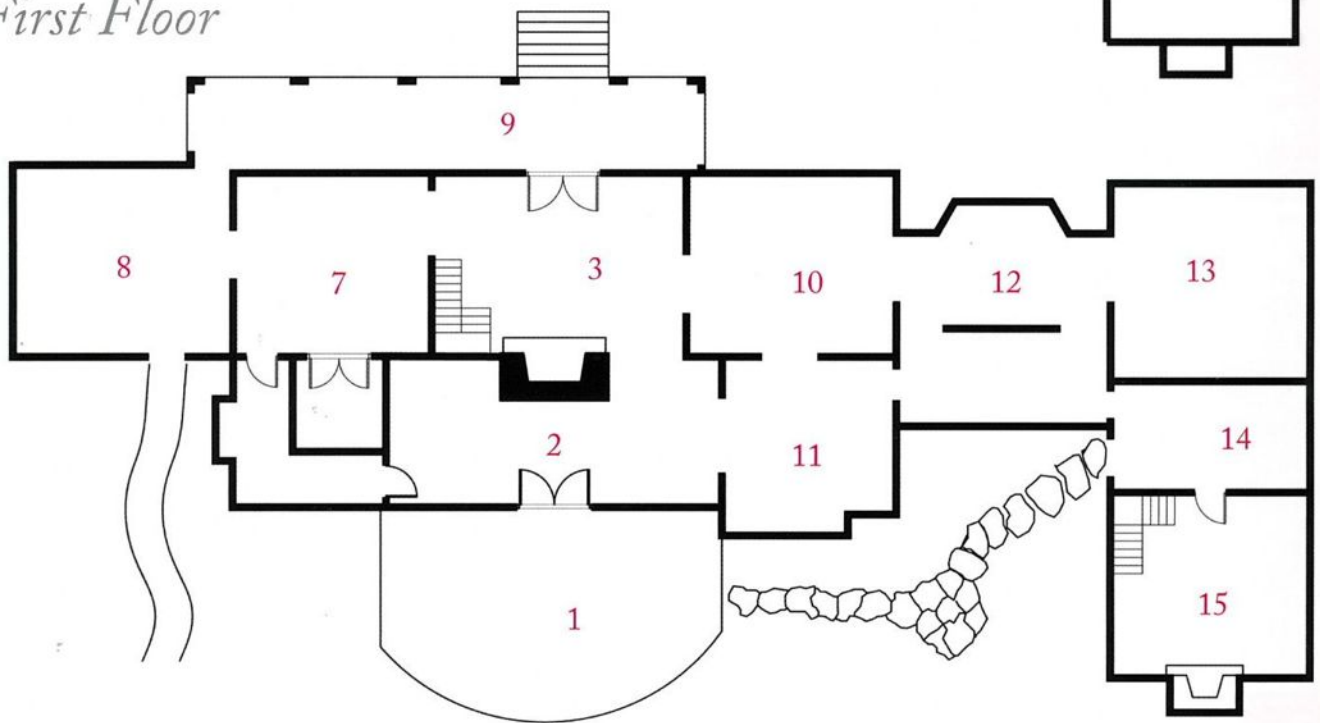


# "Reflections" Floorplans

## Second Floor



## First Floor



1 STONE TERRACE *James Farmer*

2 THE ENTRY *Charles Faudree*

3 LIVING ROOM *Carole Weaks*

4 GUEST RETREAT *Tish Mills*

5 UPSTAIRS SITTING ROOM *Debra Green*

6 UPSTAIRS GETAWAY *Skip Ryan*

7 MASTER BEDROOM *Ann Sherrill*

8 LOUNGING PORCH *Francie Hargrove*

9 FRONT PORCH *Dianne Estes*

10 DINING ROOM *Toby West*

11 KITCHEN AND BUTLER'S PANTRY *Audrey Wood and Cheryl*

12 GALLERY OF DOGS *Sally Johannessen*

13 MUSIC ROOM *Tammy Connor*

14 DOG TROT *Kris Nelson*

15 LIBRARY *Lynn Monday*

16 ACORN BEDROOM *Judy Henson and Carol Hartley*

17 WRITER'S RETREAT *Barbara Heath*

# 13

## MUSIC ROOM

### Tammy Connor

TAMMY CONNOR INTERIOR DESIGN  
 Birmingham, Alabama  
 (205) 871-9797  
 tammyconnorid.com

*Tammy Connor is the principle of Tammy Connor Interior Design, which she founded in Charleston, South Carolina, in 1999. Since moving to Birmingham, her firm has built its reputation on creating timeless classic interiors infused with a casual Southern elegance. Connor's attention to detail along with her relaxed approach to formal spaces results in interiors that are sophisticated yet inviting. Seamlessly integrating antiques, contemporary pieces, personal collections of clients and fabrics of varying textures with subtle yet studied color palettes are the trademarks of Connor's interiors.*

**WHAT ARE THE THREE THINGS IN THIS ROOM THAT VISITORS SHOULD BE SURE NOT TO MISS?** The window treatment fabric was the inspiration for the room. The patterned floor is a custom design and is the unifying element of the space. The layered color

scheme is achieved through unexpected details. **WHAT ELEMENT IN THIS ROOM MOST REFLECTS THE WAY YOU LIKE TO LIVE IN YOUR OWN HOME?** A relaxed yet sophisticated environment created by layering the fine and rustic reflects the way I live in my own home. I often combine elements with subtle textures and a warm color scheme, and I love for my designs to have a variety of ways in which one can enjoy them. This "music room" is a perfect example of this, as it can be used for a variety of social, musical and gaming activities. **WHAT IS YOUR BIGGEST DESIGN RULE AND HOW MIGHT YOU SOMETIMES BREAK IT?** My design aesthetic leans toward the classic and timeless, but I love to add little surprises in my interiors to keep spaces exciting and inviting. **WHAT BIG CHANGES DO YOU SEE IN THE DESIGN OF MOUNTAIN HOMES TODAY?** Mountain homes today are less expected and are no longer only rustic, heavy and predictable. They have more of a seasonal balance to them, creating lighter interiors that have more flexibility to them.



### Kris Nelson

WHITE RABBIT BOTANICALS  
 Cashiers, North Carolina  
 (828) 743-3700

kristina\_nelson2000@yahoo.com

*Kris Nelson, owner of White Rabbit Botanicals, is a native of Kentucky and a graduate of Western Carolina University. With an eye for eclectic objects and a love of plants and container gardening, Nelson opened her shop White Rabbit Botanicals in 2006. Purveying truly uncommon home and garden decor, Nelson also helps clients design and install creative outdoor spaces.*

**WHAT ARE THREE THINGS IN THIS ROOM THAT VISITORS SHOULD BE SURE NOT TO MISS?** The restored antique garden seating, plant compositions and the small details, which tie everything together. This is a fun space that will make you feel good. **WHAT ELEMENT IN THIS ROOM MOST REFLECTS THE**

**WAY YOU LIKE TO LIVE IN YOUR OWN HOME?** The relaxed sense of style. I believe you should feel comfortable in every room of your home, and every room should be allowed to look lived-in—a beautiful mess. Like people, the things in your space that look like they've had a life are more intriguing. **WHAT IS YOUR BIGGEST DESIGN RULE AND HOW MIGHT YOU SOMETIMES BREAK IT?** My biggest design rule? There are no rules! Mix it up! Combine different styles and just have fun with it. Bring the outdoors in and the indoors out and try adding a punch of something unexpected. **WHAT BIG CHANGES DO YOU SEE IN THE DESIGN OF MOUNTAIN HOMES TODAY?** I would like to see homeowners opting for more antique, vintage and repurposed or up-cycled decor.

# 14

## DOG TROT



# 15

## LIBRARY

### Lynn Monday

MONDAY'S HOUSE OF DESIGN  
 Cashiers, North Carolina  
 (828) 743-2094

mondayshouseofdesign.com

*A member of the International Interior Design Organization, Lynn C. Monday holds a B.A. in fine arts from Virginia Intermont College and has been a designer for over 30 years. High Hampton Inn, Hampton Spa and Chattooga Ridge Club House are some of her recent commercial projects. Her residential projects may be found in Cashiers, New York, Atlanta and Florida. Monday has been featured in many national magazines and interior design books, including a new book out this year called Interiors Southeast.*

**WHAT ARE THE THREE THINGS IN THIS ROOM THAT VISITORS SHOULD BE SURE NOT TO MISS?** Please touch the cashmere drapes, as well as the silk, cashmere and velvet upholstery, private labeled from our new store, Monday & Martin. Also note the rare

writing desk. **WHAT ELEMENT IN THIS ROOM MOST REFLECTS THE WAY YOU LIKE TO LIVE IN YOUR OWN HOME?** The personal pictures, books, books, books and yes, the brandy. **WHAT IS YOUR BIGGEST DESIGN RULE AND HOW MIGHT YOU SOMETIMES BREAK IT?** There are no rules that I will not break from time to time; rooms are like art: defined by color, scale and balance. This works better for me than design rules. **WHAT BIG CHANGES DO YOU SEE IN THE DESIGN OF MOUNTAIN HOMES TODAY?** Having been in the mountains for 23 years, I have seen many changes. I have cleaner lines and fewer collections to update your mountain look. Try some modern art and drum shades for your lamps. Most of all, edit.

