



The Stellar Collection Homes located at Northstar California Resort, near Tahoe are *not* your father's idea of mountain cabins. With architecture by Apple Inc.'s lead agency, Bohlin Cywinski Jackson, these homes are the epitome of modern elegance with a hint of rustic charm. Oh, did we mention they offer ski in—ski out access to the slopes?

Interior designer **Scott Corridan** was tasked with styling two of these homes and we were thrilled to work with him during the process. Giving contemporary style to a rustic setting, he created spaces that feel ultra-modern while respecting the mountain environment. Read on to learn more about his styling techniques:

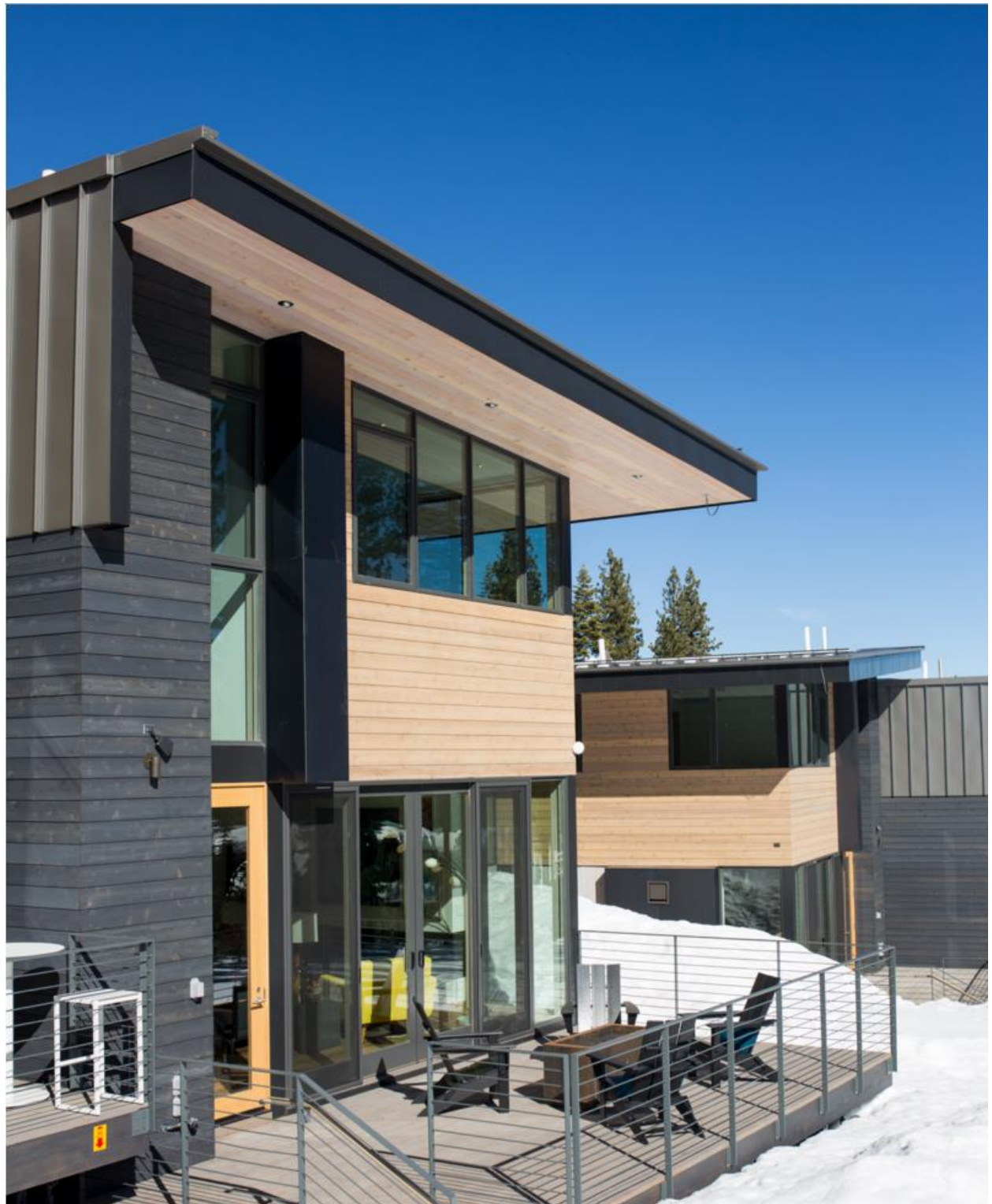




Photo Credit: via Scott Corridan

**Dot & Bo:** How would you describe the style of the Stellar Collection Homes?

**Scott Corridan:** They're modern, progressive Interpretations of the mountain home with contemporary designs and timeless comfort.

**Dot & Bo:** How does each home differ yet feel like they're part of this collection?

**Scott Corridan:** As a base, each home's palette shifts quietly in tone with varying choices of tile and counter stone surfaces, but all of them stay within the same subtle palettes of sage, charcoal, and cream.

But it is really up to the soon-to-be owners of these homes to stamp their personal definition of what a Stellar home means to them. While the vernacular will live in this update of "modern mountain," we anticipate that each home will differ with personal flair and on-trend accents.



Photo Credit: via Dot & Bo









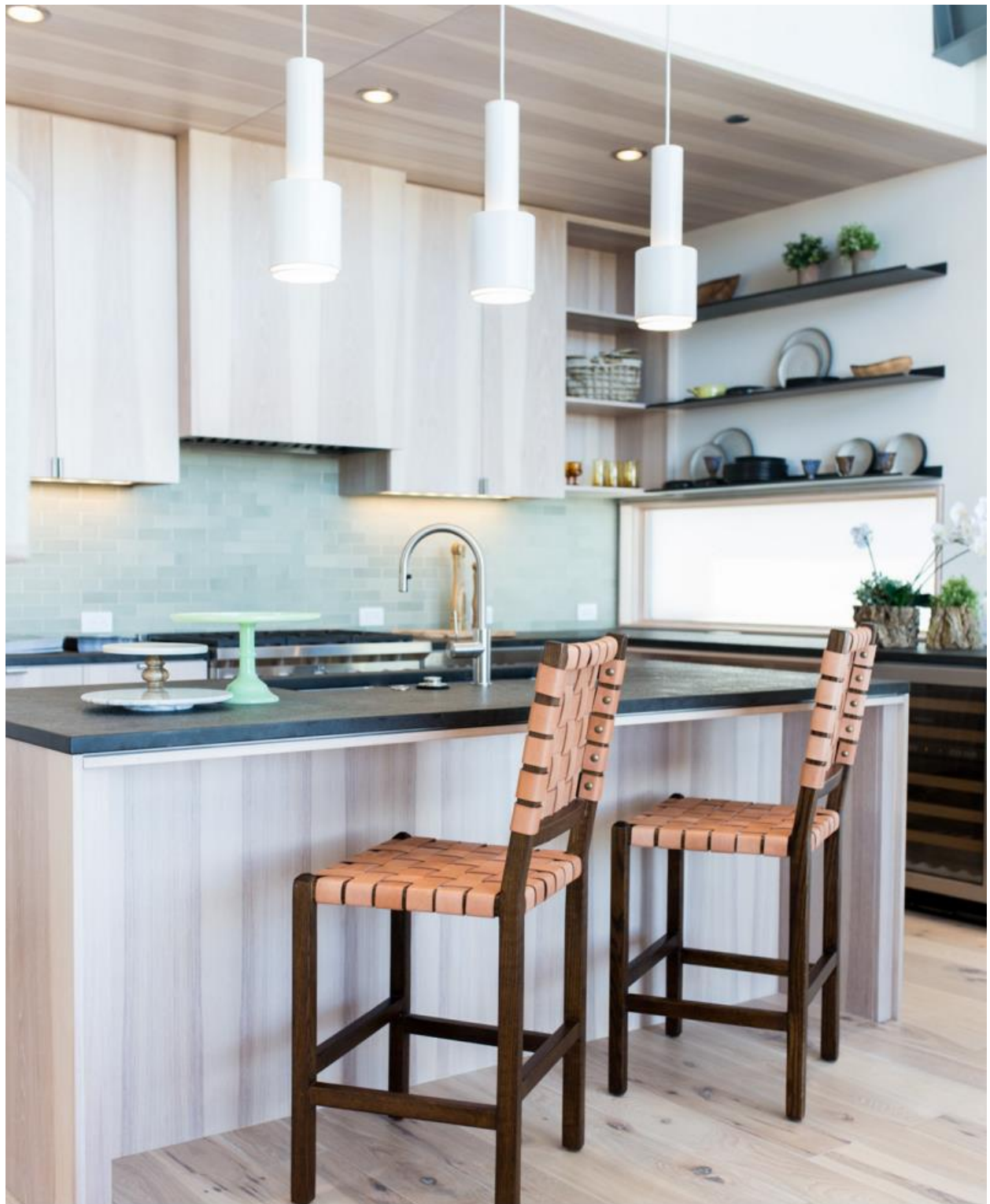








Photo Credit: via Dot & Bo

**D&B: What were some of your sources for design inspiration?**

**SC:** We looked to Southern California—especially Palm Springs—in the '50s and '60s for inspiration. We were also inspired by various pop art movements through the '60s and '70s. At every turn we tried to root things in a certain vintage, historical timelessness so that the spaces didn't feel too "trendy" and fall out of favor.

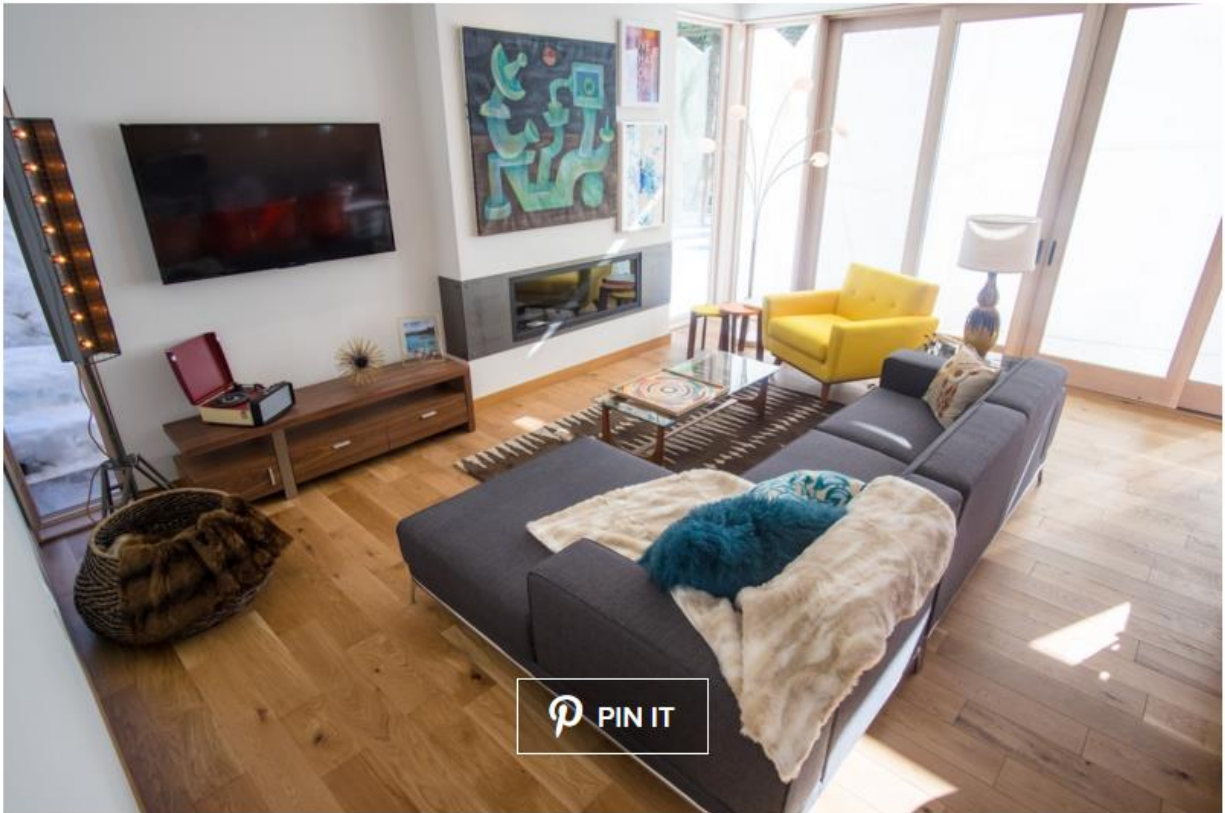


Photo Credit: via Dot & Bo



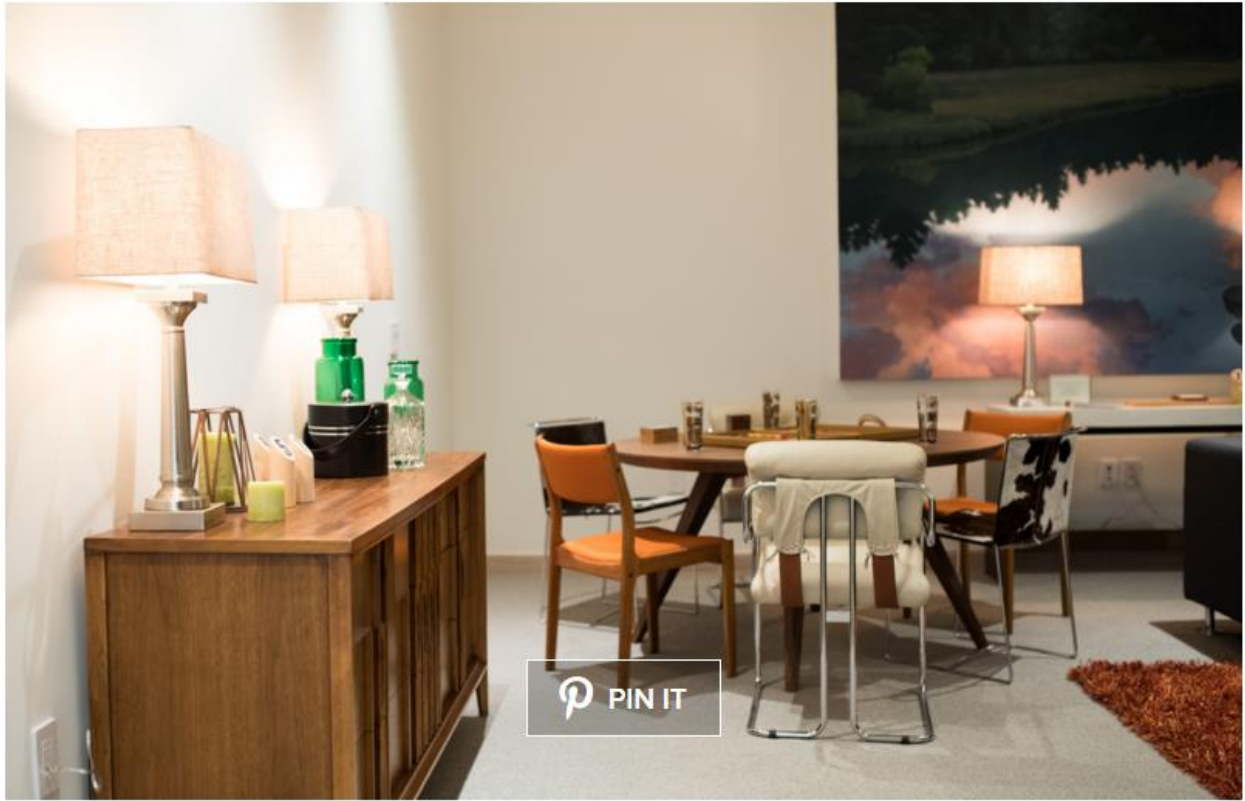


Photo Credit: via Dot & Bo





**D&B:** How does the home change with the seasons?

**SC:** Just like the perfect mountain wardrobe, Stellar is all about layering. You put layers on and you take them off.

Fur blankets and woolen pillows come out starting in October, then transition to lightweight chenille accessories and cotton pillows starting in April. Candles change in tone from chocolates and golds to mosses and persimmons.

All of this is set against a timeless palette of earth, forest, and sky. Just add snow for winter and Mule's Ears flowers for summer.



Photo Credit: via Dot & Bo



*[Shop Winter Ground Rug Now](#)*

**Dot & Bo:** What are your favorite features in these homes?

**SC:** The master suite glass box, floating dining alcove, the library below the stairs, the destination inspired artwork, and of course, the clip in and go, ski in–ski out accessibility to the natural world of wonder that envelops you at every door and window.







*[Shop the Scotia Fabric Sofa Now](#)*

Bohlin Cywinski Jackson and Scott Corridan have revolutionized the term “ski home.” They offer modernism, luxury, and comfort, while still providing all of your ski necessities. Best of all, these homes are turnkey. You can drop your bags, go skiing, and come back to a home already furnished in the [best of modern designs](#).

See More of Scott's Work [HERE](#)