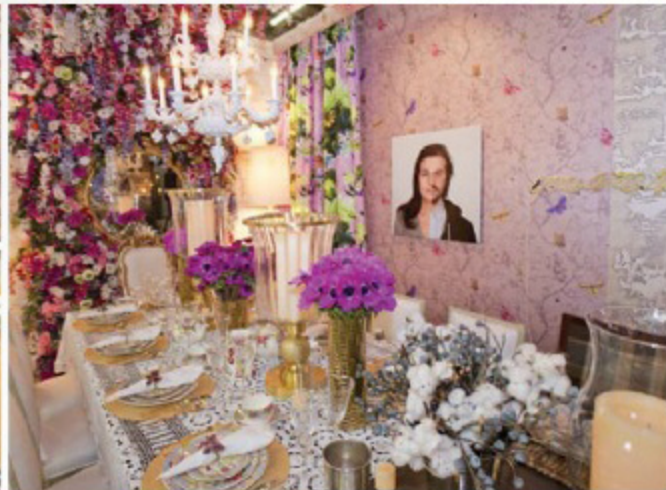


DIFFA's Dining by Design 2014

The New York Design Center was thrilled to support the 30th anniversary of Design Industries Foundation Fighting AIDS at the 17th Annual Dining by Design event, held March 20–March 24, in conjunction with the Architectural Digest Home Design Show. This year's table, designed by Kati Curtis, explored our masculine and feminine sides, asking which dominates you, guides you, and intrigues you.

Kati expressed the interplay of the boy and girl in us all, and played with stereotypes that we can so easily fall prey to. Growing out of her own design balancing acts, she created a fantasy world utilizing the New York Design Center's crafted materials and playful patterns, all used in ways that, while unexpected, also make perfect sense. Be sure to take a second look—things aren't always what they seem!



Left to Right: New York Design Center's table designer Kati Curtis; a full view of the table featuring chairs from Elizabeth Pash and Bolier, floor lamps from John Richard and Currey & Company, rugs from Roubini Rugs and Stephanie Odegaard Collection, fabric and wallpaper from Timorous Beasties through Ted Boerner and fabric by Kravet; the male place setting featuring dinnerware by MATCH through Richard Cohen Collection; Dining Arm Chair by The New Traditionalists heads the masculine PROFILES table; Porcelain Chandelier by Metropolitan Lighting Fixture Co. hangs above the female side's table; mirror by Louis J. Solomon and Venetian Dining Arm Chair by adLib Antiques; Gian France dinnerware through Richard Cohen Collection; hurricanes and vases by Global Views flank Sister & Brother Genetic Portrait by Ulric Collette; a chandelier from Currey & Company hangs above a mirror from the Thom Filicia Collection for Vanguard by Sedgwick & Brattle and Gareth Sculpture by Arteriors. Special thanks to De Buck Gallery for "You Are Not" Neon Light by Ruby Anemic. Photos by Darren Ornitz.

