

# BIRMINGHAM HOME & GARDEN

INSPIRED LIVING FOR BIRMINGHAM & BEYOND

*Trend Meets Tradition*

**15 Top Designers  
& Architects**

*Beautiful Baths*

*At Home with  
Tammy Connor*

JANUARY FEBRUARY 2010



\$3.95

0 74470 56228 3  
www.birminghamhomeandgarden.com




*You should always feel like you can  
curl up barefoot on the sofa. Nothing is  
so fine that you can't touch or enjoy it."*



Tammy Connor and her husband, Geoff, bought this 1926 Tudor in Tammy's childhood neighborhood, the Hollywood section of Homewood, in 2005. "As a child, I knew I was interested in design," says Tammy. "I used to have graph paper kits and draw floor plans and rearrange my room all the time."





*Text by* LACEY HOWARD  
*Photography by* JEAN ALLSOPP

Interior designer  
Tammy Connor's life  
comes full circle when a  
favorite house from her  
childhood neighborhood  
becomes her own.

*Coming  
home*





## GROWING UP IN THE HOLLYWOOD AREA OF HOMEWOOD

Tammy Connor was often invited to play at a friend's house, a 1926 Tudor just around the corner from her own home. "It was always one of my favorite houses in the neighborhood," Tammy says. Years passed. Tammy moved away, married, and eventually came home to a little house in Edgewood. But, after Tammy and her husband, Geoff, discovered that the house she had long adored was for sale, they bought it.

Before moving in, the couple completed a nine-month-long remodel. "We made some updates, but the majority of the renovation was aesthetic," Tammy says. They replaced old hardwood floors, cabinetry, and trim. They also repainted, creating a neutral canvas for Tammy's personal style. Known for melding elegance and comfort, Tammy says her design approach is to create refined, inviting, timeless spaces.

Taking her design cues from the architecture, Tammy worked to balance the home's dominant architectural features with furniture placement. In the living room, matching cabinets, repainted and customized with mirrored glass doors, offset the bank of windows. "Balance is critical; it helps the space feel right," says Tammy.

The Connor house's peaceful atmosphere offers a retreat from the hustle and bustle of life. "I work with colors and patterns all day, so I prefer a neutral palette in my own home," says Tammy. She adds, "It's a restful environment that helps me avoid sensory overload."

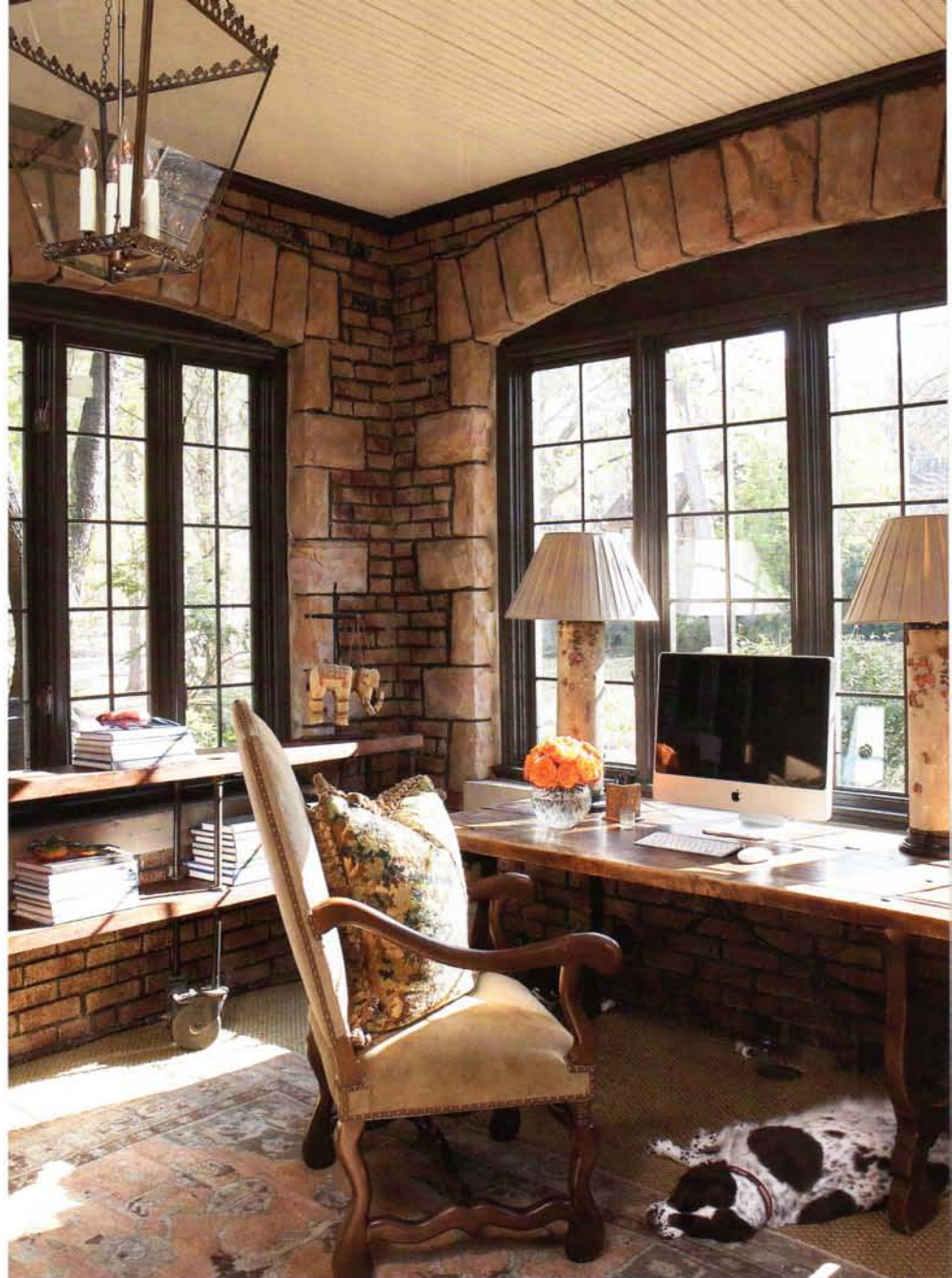


**THIS PAGE:** Prior to moving in, contractors sandblasted the painted stone walls in the study, revealing their natural beauty. **FACING PAGE TOP:** The living room's upholstered furnishings boast classic silhouettes dressed in textural, neutral fabrics. "I rarely begin with patterned fabric and match secondary fabrics to it. Doing that creates a very predictable, decorated result," says Tammy. **FACING PAGE BOTTOM:** The Connors redesigned the front lawn and hardscape by adding pavers and plantings that enhance the architecture of the house.

Her use of textures creates interiors that are welcoming as opposed to heavily decorated. Custom paint colors add to the depth of the home's rough-finished stucco walls. Embroidered draperies and pillows offer pattern. Harder surfaces such as the grass rug, iron and wood-turned lamps, and wood furnishings contrast the room's softer linens, silk, and mohair fabrics. "Comfortable, appropriately scaled upholstery is a must," says Tammy. "I'm drawn to aged pieces, but those with refined lines versus super-formal."

Realizing the inevitable consequences of having pets and children in a neutral living space, Tammy says, "I don't let the choices that I make aesthetically dictate the way we live in our house. I know things may get ruined from time to time, but I wouldn't want to stifle the fun because of replaceable things. Almost nothing is off limits to our daughter—or the 45-pound dog for that matter!"

Tammy's favorite room, her daughter's bedroom, is pale, pale pink with creamy accents. Here, she displays her most cherished accessories: bisque crosses made by family and friends at her baby shower. "All they had was a chunk of clay, a few



tools, and their imaginations," Tammy says. "I can see the personality of who made it in each one." She adds, "When my daughter was little and I was up in the middle of the night, I felt like my friends were right there with me."

Surrounded by friends is how Tammy

remembers playing in her current home as a child, and how she's happiest in her home as an adult. Now, Tammy looks forward to the day when her own daughter will be the girl in the 1926 Tudor who invites children from around the corner over to play.

**RESOURCES:** interior design: TAMMY CONNOR INTERIOR DESIGN • 205.871.9797 • [www.tammyconnorid.com](http://www.tammyconnorid.com) landscape architect: JOHN WILSON • Golightly Landscape Architecture • 205.871.9797 • [www.golightlyla.com](http://www.golightlyla.com) landscaping: BEAVERS LANDSCAPE • 205.957.9796 drapery fabricator: WILLARD PITT CURTAIN MAKERS • 404.355.8232 LIVING AND DINING ROOM: paint: SHERWIN-WILLIAMS • oystershell • [sherwin-williams.com](http://sherwin-williams.com) LIVING ROOM: art: AVERY FINE ART & FRAMES • 800.817.0749 • [www.averyart.com](http://www.averyart.com) lamps: EDGAR-REEVES LIGHTING & ANTIQUES • 404.237.1137 • [www.edgar-reeves.com](http://www.edgar-reeves.com) STUDY: desk: CIRCA INTERIORS & ANTIQUES • 205.868.9199 • [www.circaonline.net](http://www.circaonline.net) NURSERY: drapery fabrics: COWTAN & TOUT • [www.cowtan.com](http://www.cowtan.com) drapery tiebacks: SAMUEL & SONS • [www.samuelandsons.com](http://www.samuelandsons.com) crib: CORSICAN FURNITURE CO. • [www.corsican.com](http://www.corsican.com) bedding: LEONTINE LINENS • [www.leontinelinens.com](http://www.leontinelinens.com) built-in cabinets: TAMMY CONNOR INTERIOR DESIGN rug: POTTERY BARN • [potterybarn.com](http://potterybarn.com) DINING ROOM: drapery fabrics: B BERGER • [www.bberger.com](http://www.bberger.com) table: BOBO INTRIGUING OBJECTS • 404.355.2309 • [www.bobointriguingobjects.com](http://www.bobointriguingobjects.com) art: MRS. HOWARD • 404.816.3830 • [www.phoebehoward.net](http://www.phoebehoward.net) chandelier: FORTUNY • [www.fortuny.com](http://www.fortuny.com) sconces: EDGAR-REEVES LIGHTING & ANTIQUES drapery: CURTAIN MAKERS • 404.355.8232 BREAKFAST NOOK: paint: FARROW & BALL • French gray • [www.farrow-ball.com](http://www.farrow-ball.com) dining chairs: ALEXANDRA AD • 843.722.4897



## Meet Tammy:

More than a decade ago, Tammy Connor Interior Design was founded in Charleston, South Carolina. Today, Tammy's firm is a turnkey boutique business based in Homewood. "We work very closely with our clients' architect and builder and select all finishes from plumbing to tile, design, and cabinetry," she says. Though she's often working on projects in Pennsylvania, Atlanta, and the Lowcountry, the on-going renovation of the Birmingham Country Club has kept her in town these days.











1



2



3



4

## details, details

**THIS PAGE:** **1** Tammy creates interesting vignettes with souvenirs such as these Chinese calligraphy brushes. **2** Pastoral paintings and a farm-style table add a rustic touch. **3** Rarely does Tammy incorporate off-the-rack drapery into her clients' or her own home. "I'll use fragments from antique tapestry, trims, and embroidery," she says. **4** The dining room's dark wood furnishings are crowned by a Fortuny chandelier Tammy purchased in Venice a decade ago. **5** Tammy often has textiles custom made from fabric collected on her travels. Finding these one-of-a-kinds is part of the fun. "I'll buy pieces when I see them without knowing where they'll end up," she says. Others, like the one shown here, are custom embroidered. **6** In the breakfast room, a round wood table, tongue-and-groove wainscoting, a carved-wood chandelier, and nailhead trim are the rough counterpoints to upholstered dining chairs and drapery panels in a barely there pattern. **7** This painting of an elderly man is the start of what Tammy hopes will become her "wall of wisdom."

**FACING PAGE:** **8** Creamware, mostly from London, complements smooth, antique leather book bindings.



5



6



7



