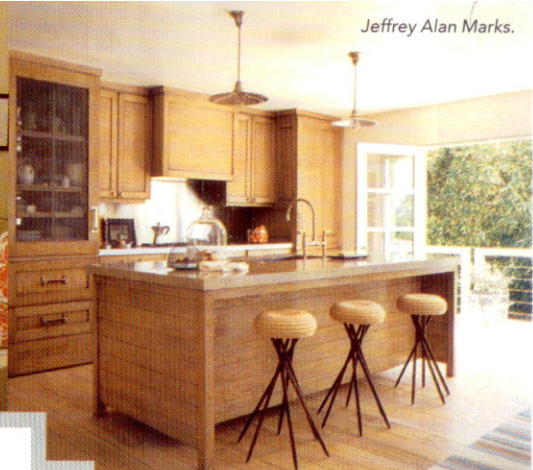




Sheila Bridges.



Alessandra Branca.



Jeffrey Alan Marks.



Jamie Drake.

THE 2011

*A-LIST*

25 TOP DESIGNERS

plus

5 TO WATCH

ONCE AGAIN, ELLE DECOR HAS COMPILED A LIST OF DESIGNERS WE LOVE, TALENTS WORKING AT THE TOP OF THEIR GAME. PLUS, WE'VE CHOSEN 5 YOUNG DECORATORS WHOSE WORK WE FIND INTRIGUING AND FRESH



Martyn Lawrence-Bullard.



Shelton, Mindel & Associates.



Suzanne Rheinstein.



Yabu Pushelberg.



McAlpine Booth & Ferrier.



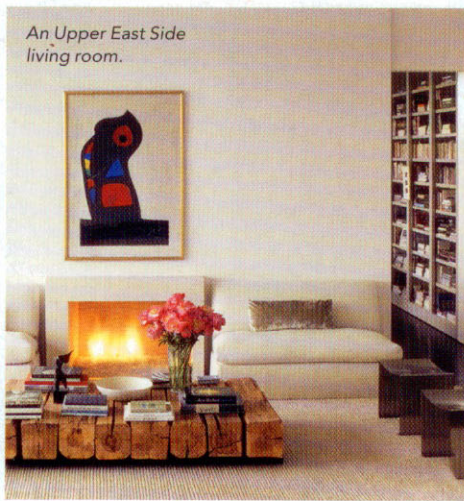
Timothy Whealon.



A Manhattan library.

## TODD ALEXANDER ROMANO

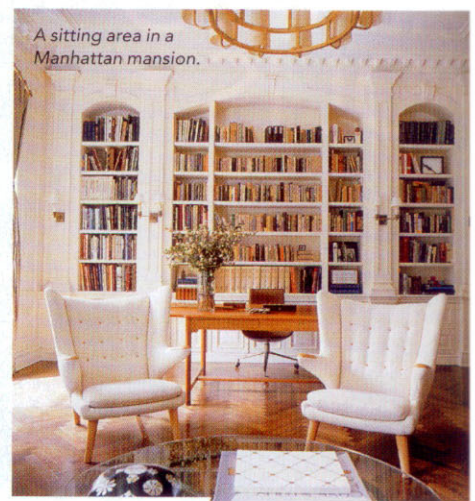
Something old, something new, something borrowed from every design vernacular on earth: That's Todd Romano. The native Texan apprenticed with Mario Buatta before striking out on his own with chic, well-turned-out rooms. In his updated traditional style, Romano plays with contrasts: velvet sofas and minimalist lithographs, Louis XVI bergères on geometric sisal. He favors clean lines and a grocery list of colors: olive, blueberry, and persimmon. With showrooms in New York and L.A., Romano is a growing national presence. [toddalexanderromano.com](http://toddalexanderromano.com)



An Upper East Side living room.

## DANIEL ROMUALDEZ

This architect-designer knows glamour. Romualdez grew up in a diplomatic family in the Philippines, and his clientele (young socialites and fashionistas like Tory Burch, Aerin Lauder, and Daphne Guinness) have made him a top-tier Manhattan favorite. He loves mirrors, glossy floors, lacquered walls. He's also committed to deep, saturated colors (like blood red) and a liberal application of gold and silver. He's equally expert at contemporary design and transforming the halls of a dowager prewar apartment into a trendsetting salon alive with art and antiques.



A sitting area in a Manhattan mansion.

## SHELTON, MINDEL & ASSOCIATES

Since Peter L. Shelton and Lee F. Mindel founded their firm in 1978, they've won international acclaim, prestigious clients (Sting, Ralph Lauren), and countless awards. Their clean-lined spaces—from lofts in Manhattan to beach houses in the Hamptons—blend stunning architectural craft with casual livability. Members of the Interior Design Hall of Fame, they think of themselves as taking an analytical approach to their work, but a real sensuality shines through too. They like lots of white and pale-blond woods, generous windows, and bursts of sassy color calculated to delight. [sheltonmindel.com](http://sheltonmindel.com)

Whealon's Southampton living room.



## TIMOTHY WHEALON

This former banker now creates rooms that are right on the money: classic but cool, worldly but rooted in the comforts of home. After a stint on Wall Street, Whealon worked at Sotheby's, specializing in the decorative arts, and this background served him well when he set up his interior design firm in 1994. A sense of connoisseurship underlies everything this New York designer does, but he has fun with it, mixing 18th-century antiques with '60s finds or tweaking a traditional interior with contemporary art. Fresh colors—from aqua to pale pink—tie it all together. [timothywhealon.com](http://timothywhealon.com)