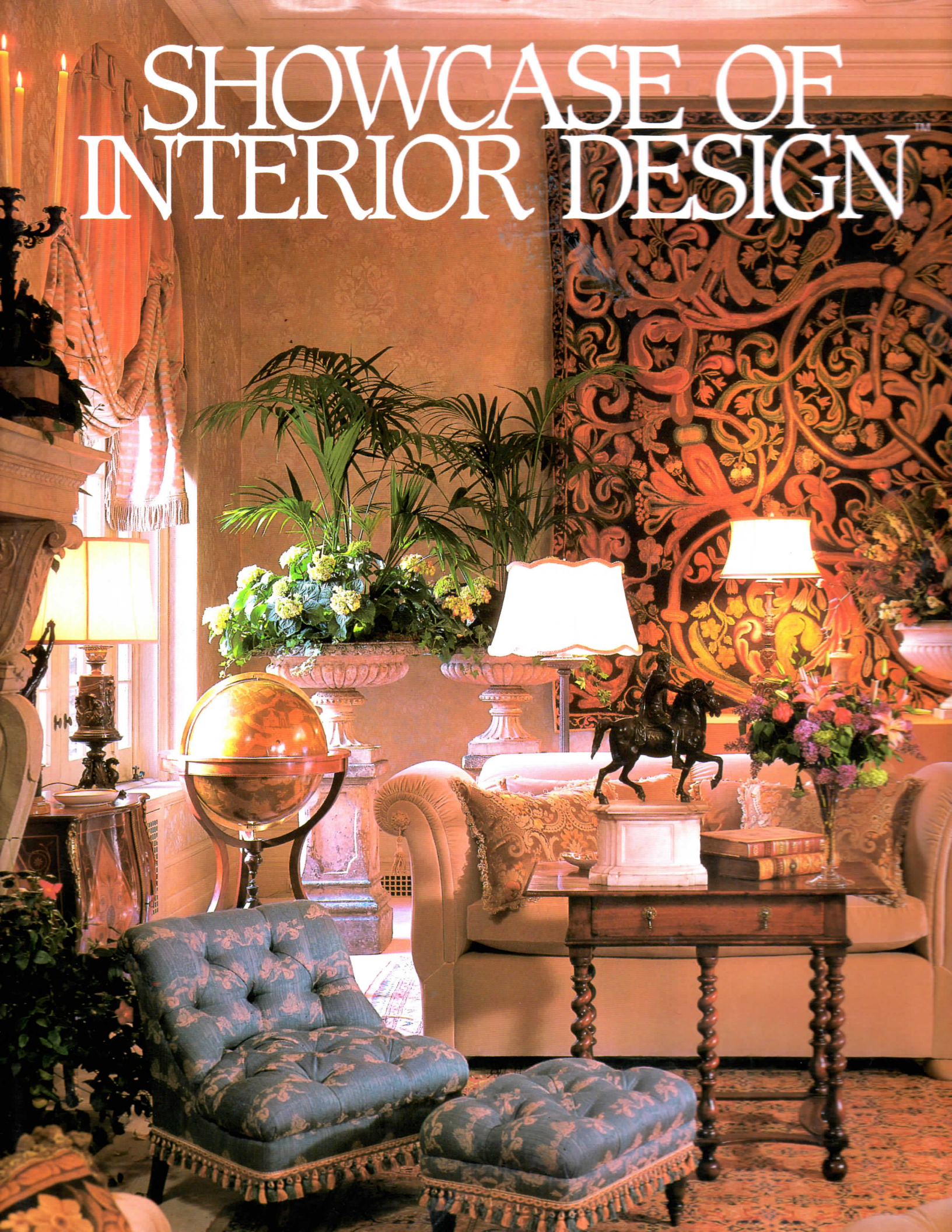


SHOWCASE OF INTERIOR DESIGN™





WEIXLER, PETERSON & LUZI



STEVEN ANTHONY WEIXLER
WALTER BAYARD PETERSON
MARCELLO LUZI, ASID
2031 LOCUST STREET
PHILADELPHIA, PA 19103
(215)854-0391

PROJECTS:

Private Residences: Philadelphia; New York; Boston; Washington, D.C.; Seattle; San Francisco; Charleston, South Carolina; Palm Beach, Jupiter Island and Miami, Florida; Bogota, Columbia; and Ascoli Piceno, Italy.

Commercial Work: Dunn Capital Management, Inc.; Connecticut National Bank; PNC Financial; Pennsylvania Real Estate Investment Trust; Shawmut National Trust Company.

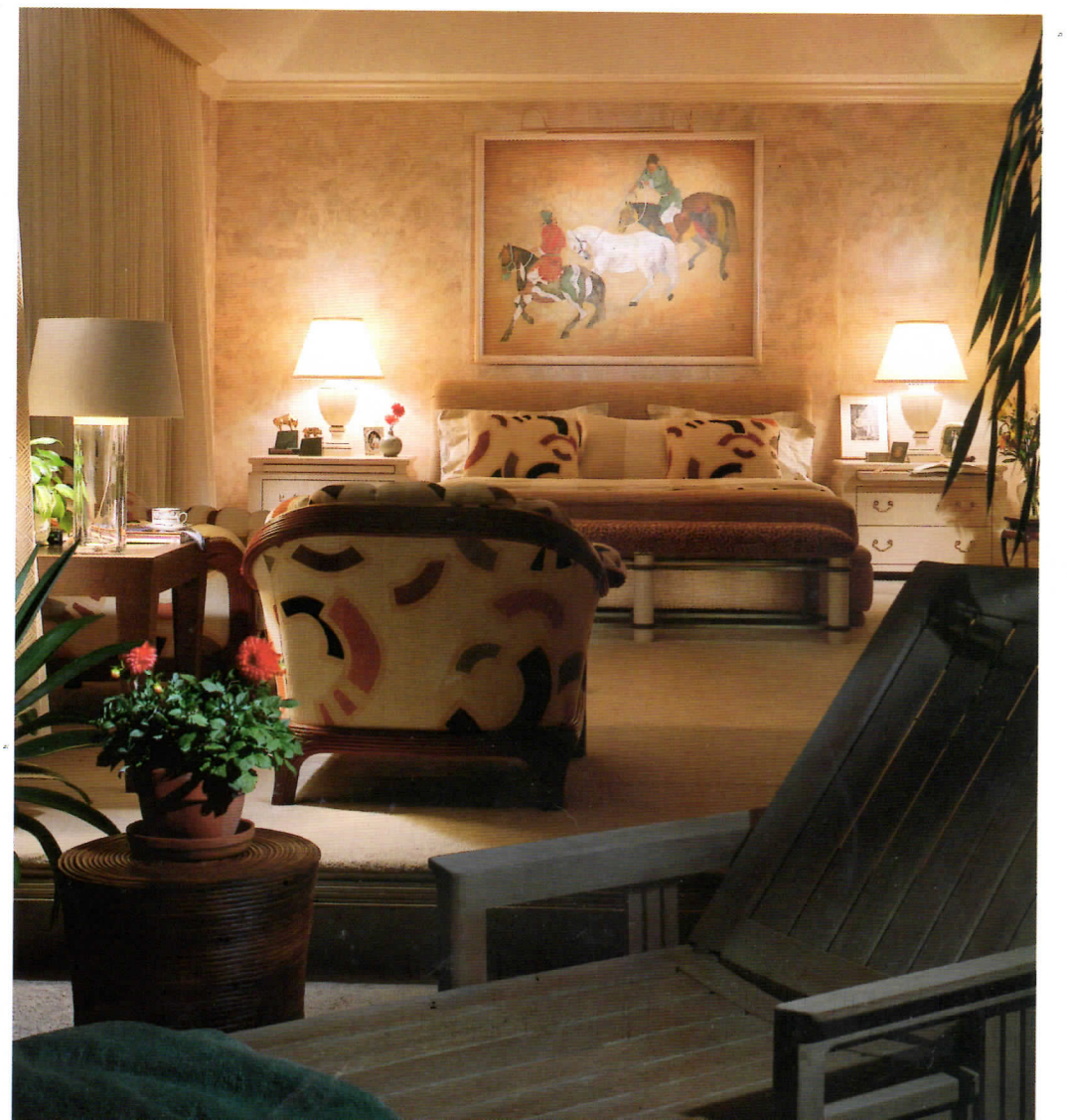
CREDENTIALS:

Licensed Interior Designers
NCIDQ Certified
American Society of Interior Designers
Philadelphia Athenaeum Associates
Philadelphia Design Industry AIDS Fund Showhouse, 1989
Vassar College Scholarship Fund Showhouse, 1986, 1987
Zurbrugg Hospital Designers' Showhouse, 1988

OPPOSITE: An exceptional 12-panel Coromandel screen provides a dramatic backdrop to the custom designed furnishings created especially to accommodate a tall husband and petite wife in their living room.

ABOVE RIGHT: Robin Daniel's canvas, "Red Untitled," hangs on a chimneybreast of Florida coquina stone. Cabinets contain antique Chinese objects. "Patinated Compotier," a sand-cast glass bowl by California artist John Lewis, rests upon a lacquered chinoiserie low table from Christopher Norman, Inc.

RIGHT: In this bedroom, seen from the pool terrace through fully opened glass doors, the designers used subtle textures and quiet colors to enhance a sense of intimacy.



WEIXLER, PETERSON & LUZI

PUBLISHED IN:
Who's Who in Interior Design,
International Edition
Interior Visions: Great American
Designers
House Beautiful
Florida Designers Quarterly
Philadelphia Magazine

PHILOSOPHY:
With backgrounds in architecture,
design and the decorative arts, Weixler,
Peterson and Luzi was established in
1981 to address the special needs of
prestigious residential and commercial
clients who seek highly personal
attention to detail. Such attention
promotes a dialogue between client and
designer that results in spatial
relationships and design elements which
better serve a client's needs.
Weixler, Peterson and Luzi insist that
"the role of a good decorator is to
vanish." Their work, which has earned
them national recognition, covers a
broad stylistic range. The firm is
frequently selected by clients who want
the design of their homes to reflect their
lives and enhance their interests.



LEFT: In the foyer, viewed through
the living room, city lights reflect
in a mirror above a Joseph Meeks
card table and a Rosa Bonheur
bronze. To the left, above a curved
loveseat in Bergamo velvet, hangs
a French Apostolic Palace scene
by Bernard Borione from Frank S.
Schwarz & Son. "Byron's Pool on
the Granta" by Joseph Murray
Ince (English, 1880) is on the
right wall.

OPPOSITE: Under festoon
curtains of Clarence House silk
taffeta, a pair of Portuguese
Louis XV fauteuils surround a
Regency writing table from
Kensington Place Antiques;
Bouillotte lamp is from
Kensington Place Antiques;
antique silver from Niederkorn.
On the mantel sit three pieces of
delft from Bardith. Oil painting
above and watercolors to the left
are from Frank S. Schwarz & Son.

BELOW: A Smith of Chichester
landscape over the sofa and near
an English Regency table
balances a rare George III Scottish
wing chair and a Philadelphia
secretary opposite. Traditional
proportions in the contemporary
cocktail table complement a pair of
Louis XV giltwood fauteuils.
The walls are overglazed and
varnished to achieve a subtle
backdrop.

