

A Fresh Spin

A pair of architects and a dedicated client bring an unconventional 1960s-era dwelling into the 21st century.

BY ANNA FIXSEN

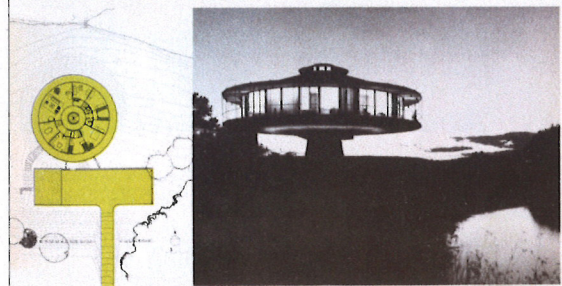
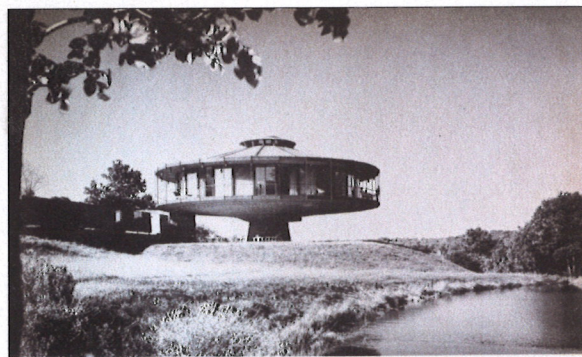
PHOTOGRAPHY BY IWAN BAAN

ARCHITECT RICHARD T. FOSTER caused quite the stir when his mushroom-shaped house sprouted out of the rural Connecticut landscape in the spring of 1968. Not only did the structure resemble something from the *Martian Chronicles*, it rotated in both directions atop its trunk-like pedestal. When *The New York Times* asked Foster—a protégé of Philip Johnson—why such residential designs had yet to catch on, he shrugged: “Look how long it took man to get out of the cave.”

Nearly half a century later, Foster’s Round House—floating over the landscape like a marooned spacecraft—still feels thrillingly radical. But when Judd Tully, an art critic, and his wife, Rea, purchased the house in 2010 as a weekend getaway, it became clear that it required some upgrades. The Tullys turned to Atlanta-based architects Merrill Elam and Mack Scogin to breathe new life into their unusual home.

“Our initial thought was, whoever buys a round house that moves has to be very interesting,” says Elam.

They also may want to stock up on Dramamine. Foster’s 500,000-pound house rotates around a fixed, 9-foot-tall spiral concrete stair using a 3-ton ball bearing assembly. The



Beautiful detailing enhances a very special house

The unusual glass-walled revolving house shown on these pages was designed by architect Richard Foster for his own family on a six-acre site in rural Connecticut. Rejecting many more conventional schemes, the architect arrived at the final design as the ultimate response to the site's breathtaking, near-perfect view of the surrounding countryside. For fullest advantage of the view—farmland hills and a distant lake to the west, a meadow and nearby pond to the east, and a pine forest to the north—the architect enclosed his circular house in glass, set it on a pedestal, and made it rotate for changing landscape, sun and moon.



72-foot-diameter upper volume relies on an umbrella-shaped steel structural system and—unlike revolving restaurants of the period—an ingenious scheme of concealed trolleys and troughs that allow the plumbing, electric, and water connections to pivot with it.

The machinery may be complex, but the user controls the house with the push of a button on a shoebox-sized control panel. Relying on just a 1.5 horsepower motor, the house can revolve up to 5 feet per minute. For the unaccustomed, it can feel a bit like traversing the deck of a ship.

In spite of the home's revolutionary nature—both literally and figuratively—little daylight from the 360-degree windows penetrated its center. “It was a little melancholy,” says Scogin, a sense amplified by Foster's strict adherence to a radial floor plan, so that rooms surrounded the stair core like pie slices.



Scogin and Elam sought to “soften” the house by breaking up the geometries and by bringing nature into the interior. This begins as soon as one ascends the spiral stair in the house’s “trunk.” The architects built a low wall around the floor opening so that—like a stage curtain prepped for a big reveal—a visitor’s first views are out to the undulating landscape, not the terrazzo floor.

From the stair, one can access the living room, the kitchen, the master bedroom suite, or the children’s room—depending on where the house is in its orbit. A previous renovation eliminated a wall to unify the kitchen and living areas, but the architects also opted to remove additional partitions to allow for a more generous master bedroom suite and a larger bedroom for the Tullys’ 10-year-old daughter.

Crucially, the architects incorporated reflective surfaces

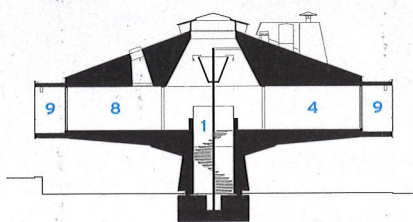
throughout so that views of the countryside are visible even when looking inward. Just off the kitchen, a clever series of sliding glass partitions diffuse light, but also conceal a fireplace and, in a study, slide shut to become a guest room. Meanwhile, sliding doors along the glazed perimeter open onto a porch. To bring the house up to code and to curb visual obstructions, Scogin and Elam designed a glass railing. Standing there on a misty spring afternoon, the calls of redwing blackbirds and blue jays harmonized with the hum of the house in motion.

Scogin and Elam replaced the single-pane windows with double insulated glazing, restored and replaced the original weathering-steel fascia, and upgraded the cedar shingle cladding where necessary. Working with Foster’s archives, which Rea Tully obtained from the architect’s son, they were

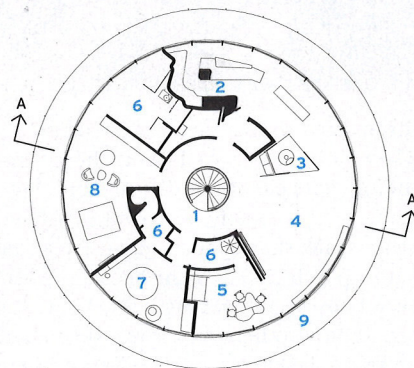
DISK DRIVE
Though Richard Foster’s Round House made its first appearance in *Record*’s April 1969 issue (opposite, left), it still feels utterly ahead of its time, hovering above the verdant landscape like a midcentury UFO (above).



IN THE ROUND Light from the house's 360-degree windows (top, left) is magnified by gleaming surfaces and a crisp palette of white and metallic finishes (bottom, left). Canvases by artist Joseph Kosuth surround the stair (above).



SECTION A - A



LIVING-LEVEL PLAN

0 10 FT.
3 M.

- | | |
|--------------------|-------------------|
| 1 CENTRAL STAIR | 6 BATHROOM |
| 2 KITCHEN | 7 CHILD'S BEDROOM |
| 3 FIREPLACE | 8 MASTER BEDROOM |
| 4 LIVING ROOM | 9 PORCH |
| 5 STUDY/GUEST ROOM | |

able to track down the original cobblestone specialist to redo the outdoor terrace, and the schematics for the ball bearing assembly. Remarkably, the mechanical components required minimal servicing—though the house needs the occasional greasing, says Rea.

Peculiar maintenance aside, the family has adjusted to life in their futuristic abode. They set it into motion every day—whether to entertain guests, to get a better view of their chicken coop, or to move away from the din of pond frogs at night. Rea is working to put this part of Foster's archive online, so that the public can learn about the architect's extraordinary home.

But the extra exposure might be unnecessary: tourists will often park in the Tullys' driveway to gawk. Luckily, the owners can simply turn the house away. ■