

CTC & G

Connecticut Cottages and Gardens

COTTAGESGARDENS.COM | FEBRUARY 2017

Celebrate

COLOR!

AS SEEN IN
CTC&G
Connecticut Cottages and Gardens



RUG PORTFOLIO

GEOMETRY LESSONS

GRAPHIC DESIGNS, ABSTRACT COMPOSITIONS AND CONTEMPORARY
RUG MOTIFS ADD UP TO MODERN ART UNDERFOOT

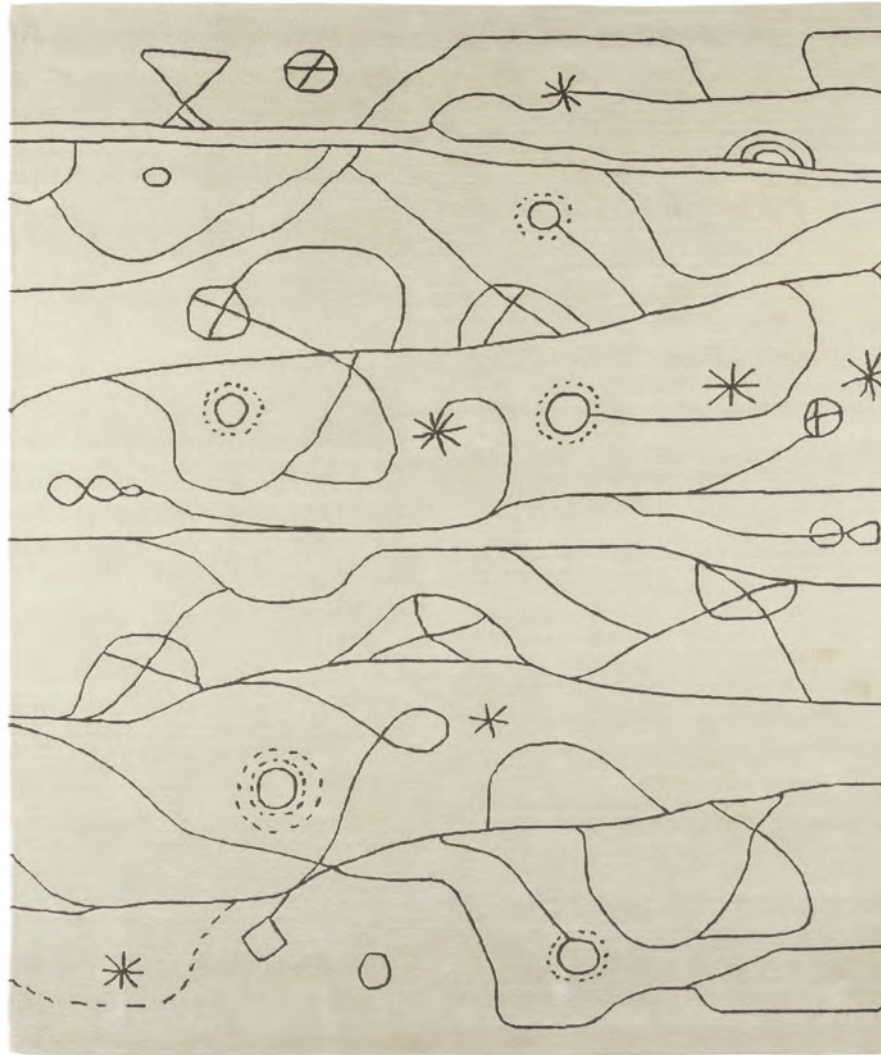
PRODUCED BY D.J. CAREY AND MARY FITZGERALD

(THIS PAGE, CLOCKWISE FROM TOP) *Cybill*, by **Elizabeth Eakins**, is handmade and hand-tufted in a blend of silk and wool. The combination of fine loop and velvet delivers a dimensional texture. *Norwalk*, 203-831-9435, elizabethheakins.com. Made in Nepal, but inspired by the hand-painted scarves of Brooklyn textile artist Susan Steinbrock, the *Butterscotch* rug in wool and silk is from **Classic Rug's** Color Collection. *D&D*, 212-832-3338, classicrug.com (7). Painterly strokes of color lend the *Brushed Prismatic* **Tamarian** rug its distinctive character. The Tibetan wool is spun by hand, creating a raw, organic weave with a lustrous texture. *Through Lillian August*, 855-576-4144, lillianaugust.com.

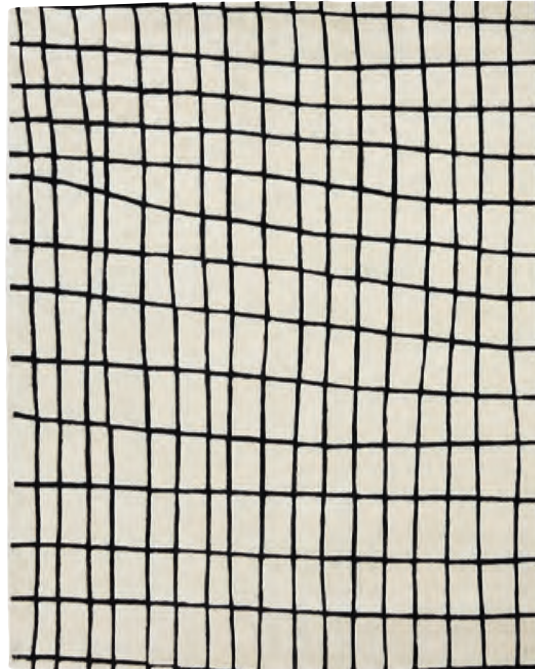




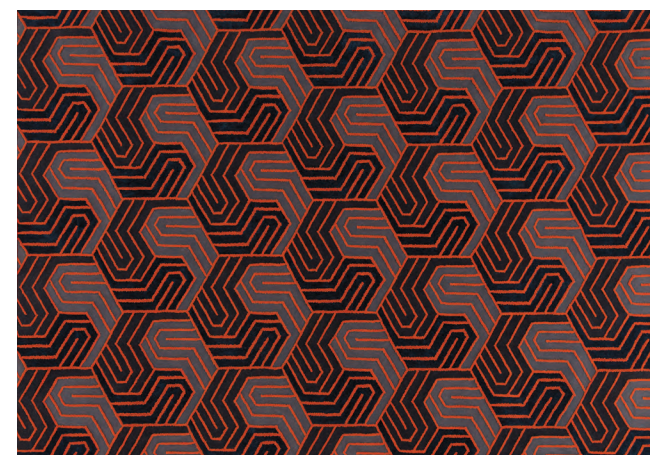
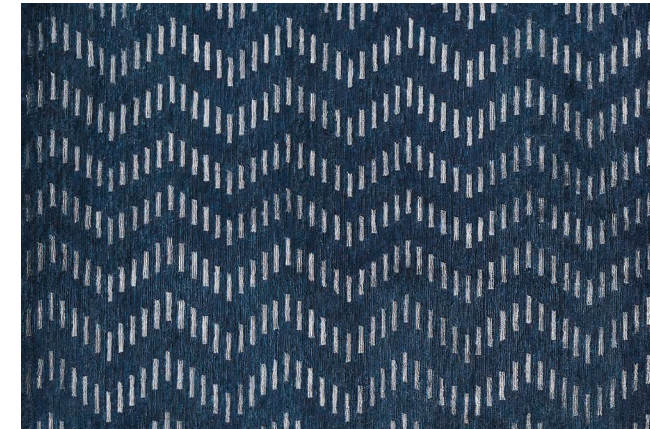
RUG PORTFOLIO



(THIS PAGE, CLOCKWISE FROM TOP LEFT) Finnish architect and designer **Kristiina Lassus**' Kuuma rug is inspired by distant cultures. The low-pile rug is produced from Tibetan wool in a 100-knot count. *Through Lillian August, 855-576-4144, lillianaugust.com.* Evoking the folkloric nature of Scandinavian design, the flat-weave rug from **ABC Carpet & Home** sports a zigzag pattern in soft hues. Handwoven in India in a wool blend. NYC, 212-473-3000, *abchome.com.* The Linked Up rug, by designer Linherr Hollingsworth for **Kravel**, is offered in five muted organic shades from bronze to indigo. Made in India and handloomed of 100-percent Viscose. *D&D, 212-421-6363, kravel.com (T).* The abstract grid pattern of Quadric, designed by René Barba for **Ligne Roset** is available in tufted wool or woven kilim. NYC, 212-375-1036, *ligne-roset.com.* Optical hexagons, reminiscent of the crystalline structure of Graphene—the rug's namesake—form a graphic pattern in the Lorenzo Castillo collection for the **Rug Company**. NYC, 212-644-9200, *therugcompany.com.*



RUG PORTFOLIO



(THIS PAGE, CLOCKWISE FROM LEFT) From the Ben Soleimani Collection for **RH**, the handwoven *Vetra* rug is a mix of wool, viscose and cotton and offered in four colorways. *Greenwich, 203-552-1040, rh.com.* The building-block pattern of the wool *Lattice* rug by **Nanimarquina** is handwoven in Pakistan. The rhythmic succession of colors stems from the imaginations of Parisian designers Ronan & Erwan Bouroullec. Available at *Design Within Reach, Stamford, 203-614-0787, dwr.com. nanimarquina.com.* Archival designs by **Edward Fields** carpet makers pay homage to the brand's founder and 1970s design. The *Overlap* pattern, in wool and silk, is part of the *Magnetic Edition*. NYC, 212-310-0400, *edwardfields.com.* Based on the abstract paintings of Argentinean artist Antonia Guzman, **Orley Shabahang** has introduced a line of handknotted wool rugs. Eight months in the making, the Guzman collection transforms the light, shadows, brushstrokes and color blending from the canvas to a textile form. NYC, 212-421-5800, *orleyshabahang.com.* *Element II*, a hair-on-hide rug in ink and cream, crafted in Texas, is part of the **Kyle Bunting** Artist Collection. The rug is the vision of artist Abidemi, depicting the infinite possibilities of space. *Through Edelman Leather, D&D, 212-751-3339, edelmanleather.com, kylebunting.com (T).*



RUG PORTFOLIO



(THIS PAGE, CLOCKWISE FROM TOP LEFT) Interior designer Marshall Watson has developed a line of all-weather rugs influenced by Swedish design. His exclusive Elegance Outdoors Collection is in collaboration with **Doris Leslie Blau**. NYC, 212-752-7623, dorisleslieblau.com (T). Inspired by the principles of 18th-century French weaving traditions, the updated designs and fresh colors of the Aubusson Nouveau collection by **J.D. Staron** are handspun in wool yarns with accents of cotton and silk. Stamford, 203-351-1130, jdstaron.com. **Stark**'s Nairamat Tibetan Collection employs old-school techniques, from the handspun and carded wool, to the pot-dyeing process. Each Sikara rug is woven on an upright loom using the Tibetan Loop Senneh knot technique. D&D, 212-752-9000, starkcarpet.com. Designer Hutton Wilkinson has teamed up with **Patterson Flynn Martin**, combining art deco style and brilliant blues in the Deco Bamboo rug in Lapis Lazuli. Hand-tufted and crafted in China in wool and silk. D&D, 212-688-7700, pattersonflynnmartin.com (T). Blue Square, designed by Brett Beldock for **Doris Leslie Blau**, is hand knotted in wool silk blends, and is available in custom sizes. NYC, 212-752-7623, dorisleslieblau.com (T).

