

CHICAGO

luxe.

interiors + design®



\$ 9.95 A SANDOW PUBLICATION | LUXE SOURCE®



VOLUME 13, ISSUE 4 | DISPLAY UNTIL 11/09/15

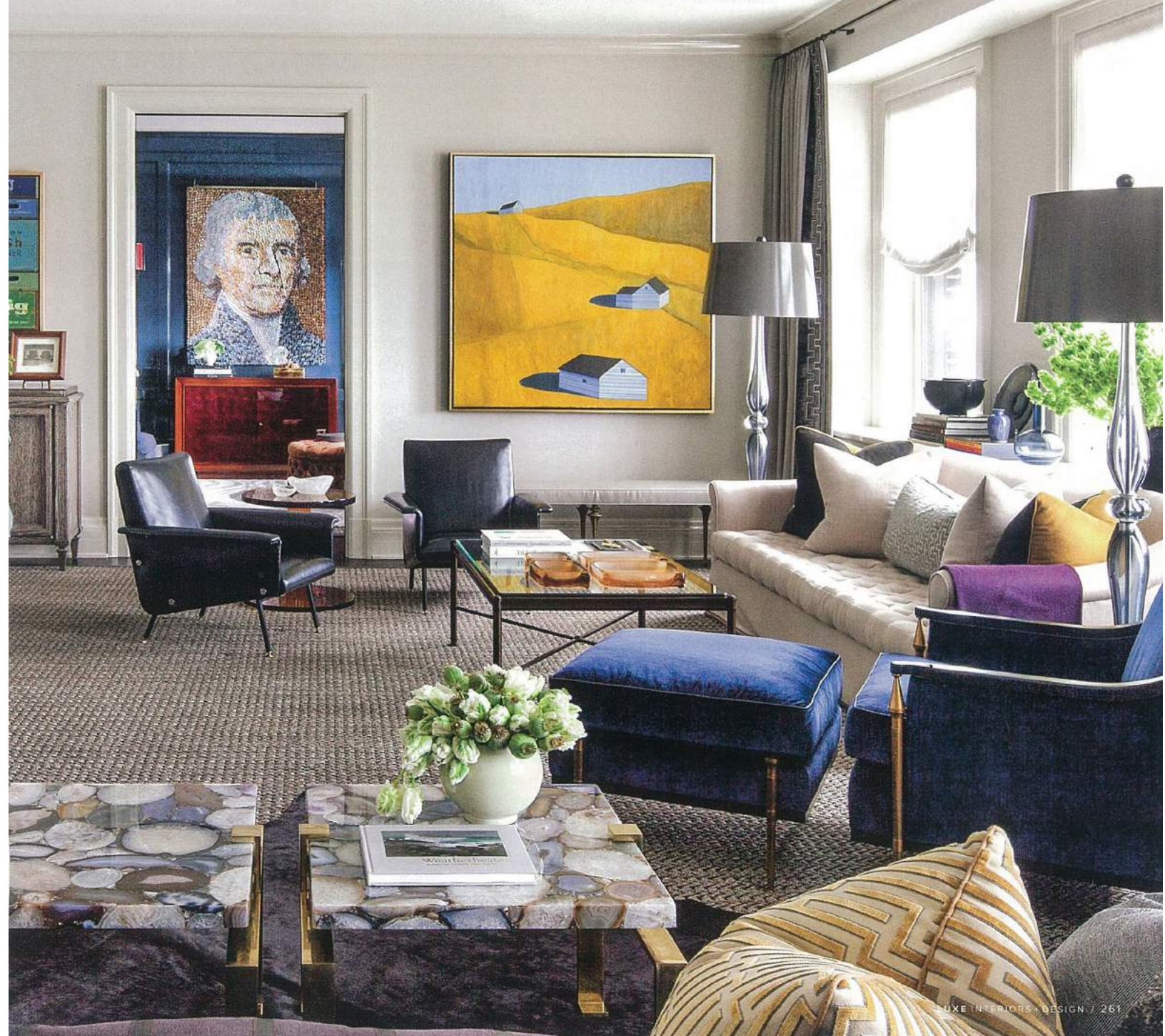


INTERIOR DESIGN / DOUG ROACH AND ALAN GILMER, DAVID SCOTT INTERIORS, LTD.
ARCHITECTURE / JOAN CRAIG AND TOM WYNN, LICHEN CRAIG ARCHITECTURE + INTERIORS
HOME BUILDER / MARK FRASER, FRASER CONSTRUCTION, INC.

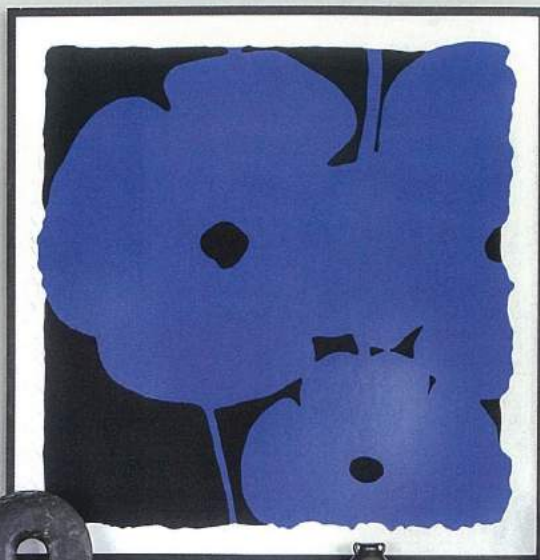
TALL *order*

SOPHISTICATED ELEMENTS AND SATURATED COLORS ABOUND IN THIS GOLD COAST APARTMENT WITHOUT SACRIFICING THE PRACTICAL NEEDS OF A LARGE FAMILY.

WRITTEN BY JORGE S. ARANGO / PHOTOGRAPHY BY NICK JOHNSON



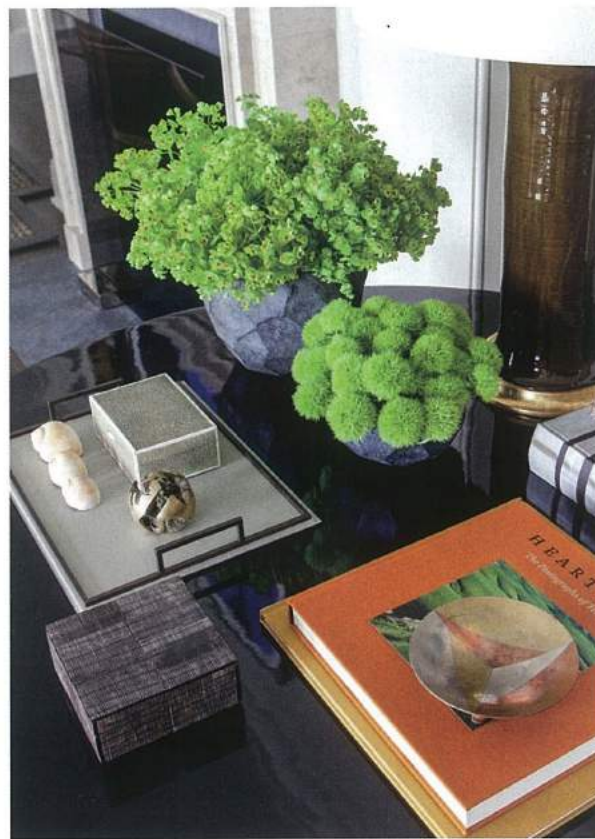
Two John Dugdale cyanotypes, and a Donald Sultan poppy silk screen bring blue hues into this Gold Coast living room. Conceived by designer Doug Roach, the space includes Hervé Van der Straeten sconces from Maison Gerard in New York, a Dennis & Leen library chair from Holly Hunt and a French folding stool from Karl Kemp Antiques in New York.







Edward Fields' custom leather-bound sisal rug and a comfy Roman Thomas sofa in Lee Jofa linen pair with other sophisticated pieces, such as the Baker armchair and ottoman covered in a dark sapphire Holland & Sherry fabric, a Louis XVI-style étagère from John Boone in New York and Otium's Balustra floor lamp from Dennis Miller Associates in New York.





This page: A 1950s T.H. Robsjohn-Gibbings chest of drawers from Karl Kemp Antiques, a gilt-*faux bois* mirror from Van den Akker Antiques in New York and a luxurious shagreen lamp base from BK Antiques with a custom lampshade from Illumé, both in New York, all help to create an eclectic living room vignette.

Opposite: Details in the living room include Robert C. Jackson's painting of packing crates from Gallery Henoch in New York; accessories atop a circa 1825 Biedermeier center table from Ritter Antik in New York; handcrafted objects displayed on the elegant étagère and a custom agate-topped table from DLV in Brooklyn.





In the dining room, a custom Harvey Probber-style sofa, as well as vintage T.H. Robsjohn-Gibbings klismos chairs featuring Ralph Lauren Home's Serengeti zebra fabric, from Cain Modern in West Hollywood, California, offer extra seating at the 1950s rosewood table from Van den Akker Antiques. Sheer cashmere Roman shades and wool-flannel drapery panels, both through Holland & Sherry, frame views of Lake Michigan. The wall sconce is from Ralph Pucci International.

Crisp contrasting elements add interest to the master bathroom. Custom cabinetry designed by architect Joan Craig includes hardware from The Brass Center in New York. The cabinetry complements a black Venetian plaster accent wall by Simes Studios. Studium's Dimensional Boxes flooring, a rock-crystal shower door handle by Sherie Wagner International and a lantern reflected in the mirror from Remains Lighting complete the look.



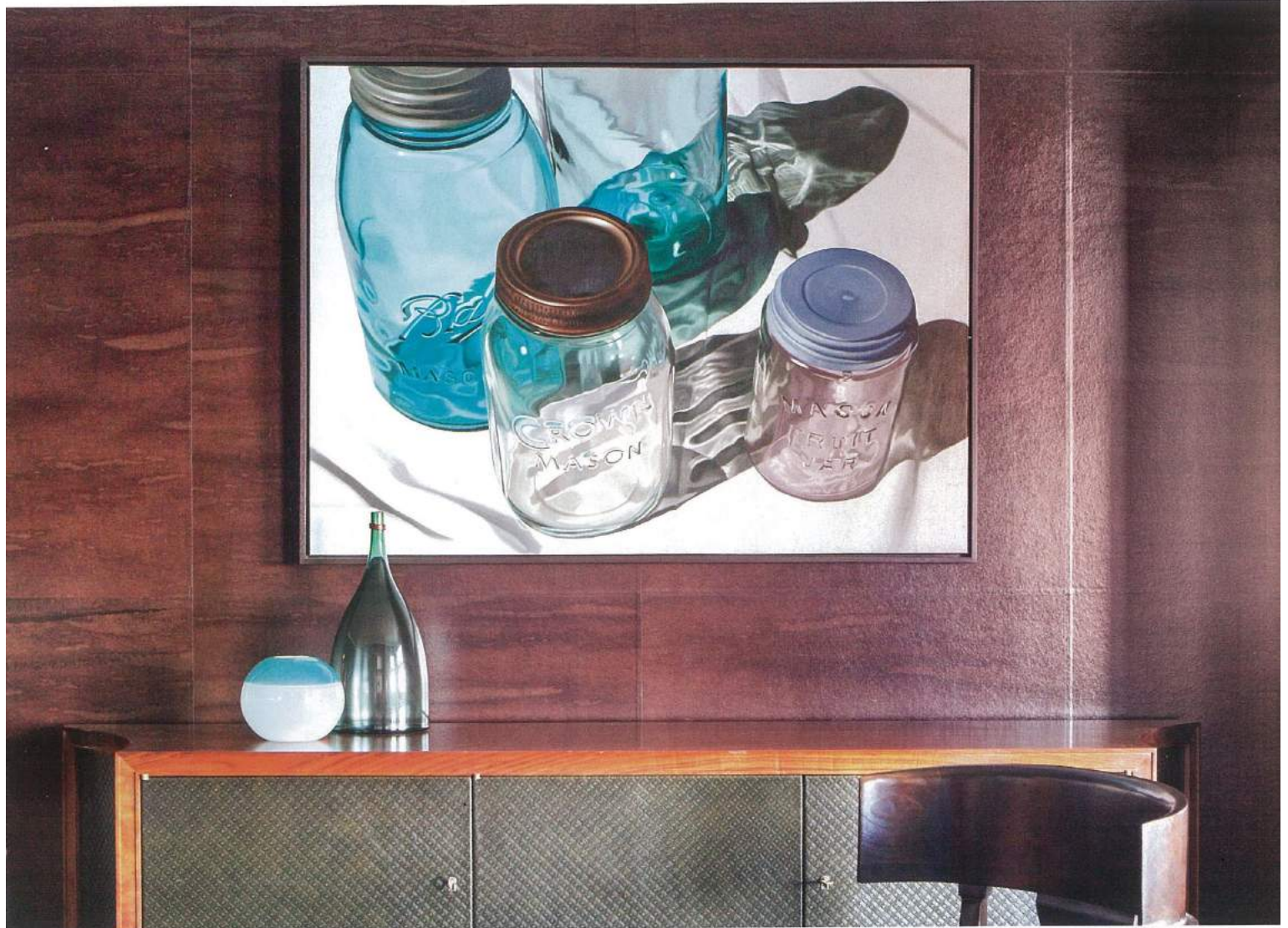


Textures in the master bedroom include a Phillip Jeffries grass cloth from Holly Hunt on the wall; John Matouk & Co. bedding from Gracious Home in New York; a hexagonal-patterned Edward Fields carpet and a custom channel-tufted platform bed fabricated by J&P Upholstery in Long Island City, New York. A Christopher Spitzmuller lamp base sits atop a Mattaliano nightstand.



Striking silhouettes can be found in the breakfast area: a custom yacht table from Soane in New York and Donghia's Anziano chairs. Above the vignette is a chandelier from Holly Hunt. The clients' existing artwork graces the wall, which features a custom Donald Kaufman Color hue. Roman shades were made with a printed linen stripe Dedar fabric purchased from Jerry Pair in New York and fabricated by Zirlin Interiors.

In the dining room, Maya Romanoff's Weathered Walls in Lacquered Bark create a moody atmosphere. The wallpaper is balanced by a Steve Smulka painting from Gallery Henoch that brings a sense of light and reflection to the space; the piece hangs above a Roman Thomas console with custom leather doors by Holland & Sherry and a St. Laurent marble top.



“WE WANTED IT TO FEEL LIKE
THEY WERE COMING HOME
AND TO CREATE A SENSE OF
BELONGING FOR THEM.”

-JOAN CRAIG

A hallway leading to the master suite is lined with books assembled on shelves, fabricated by KWI Custom Cabinetry, featuring a Fine Paints of Europe high-gloss hue. Sconces are from The Urban Electric Co., and a custom cowhide runner from Tibetano in Englewood, New Jersey, adds a textural note on wood floors from One Buster Flooring Corporation.



The office's navy blue-lacquer paneling fabricated by KWI Custom Cabinetry and Roman Thomas armchairs in a Ralph Lauren Home fabric are brightened by vivid color, such as in the tomato red of the shades on Maxime Old 1940s gilt-bronze sconces from L'Art De Vivre in New York. A desk from Linda Horn in New York is paired with a custom ottoman and silk zebra-patterned Edward Fields rug. The side table is by Liz O'Brien in New York.

