

# CTC&G

Connecticut Cottages and Gardens

COTTAGESGARDENS.COM | OCTOBER 2015

## THE DESIGN ISSUE

FEATURING THE DESIGNER SHOWHOUSE ON THE GREEN



THE UNVEILING OF THE  
DESIGNER SHOWHOUSE  
ON THE GREEN

# SHOWSTOPPING DESIGN

BY CATRIONA BRANCA | PHOTOGRAPHS BY KEITH SCOTT MORTON AND ERIC RICHARDS





**Hex Appeal** Alice Black's new collection of fabrics through Jerry Pair is proudly displayed in the upholstered walls, drapery panels and some of the pillows. Custom lounge chairs are upholstered in a Holland & Sherry fabric. Ceiling light is through L'Antiquaire. Additional pillows and throws are through Rosemary Hallgarten. Accessories are through Bungalow. See Resources.

## KEN GEMES INTERIORS

### GUEST BEDROOM

"I wanted to create an unexpected oasis using elements that draw you in for a conversation with friends or for a little alone time," says Ken Gemes. "The room acts as a study, but a sofa bed allows for easy transition for overflow guests. The color story of bottle green and ink blue came from the graphic details in the sofa fabric. The colors are found in art as well as the mens-wear diamond pattern in the custom rug. Oversized items, such as the black and white photography, the flame fixture and the image over the sofa, help make the space appear larger than it is. My favorite item is the brass lighting fixture, which reminds me of something from the sea. It has such personality and a touch of whimsy, giving the low ceiling a much-needed boost."



**Bright Spot** Circle prints from Natural Curiosities deliver color to a corner of this room. Side table is through Creative Metal & Wood. Lumbar pillow is covered in a Zoffany fabric. See Resources.

## ALICE BLACK INTERIORS, INC.

### UPSTAIRS SITTING ROOM

"I utilized the quaint nature of the space to my advantage in creating an intimate lady's sitting room," says Alice Black. "The setting is nouveau bohemian chic, inspired by fabrics from my new textile collection. The walls are upholstered in Yasmine color Fig from the Alice Black Collection, with Farrow & Ball's Ammonite painted below the chair rail. The room combines an eclectic mix of pieces—a custom lacquered étagère, a towering artisan-made gazing glass mirror, and a verdigris rain drum table—that blend seamlessly with unexpected color combinations of metallic hues and accents of deep aubergine to add a touch of luxe enchantment. The rich layering of patterns and textures stimulate the senses while providing a serene escape."

## KLAFF'S

### MASTER BATHROOM

When it came to designing the master bathroom, Joe Passero was tempted to pass on the space because it was so small. "My first thought was to move the wall back 30 inches and close the second entrance to the master bedroom," says Passero. "Once there was room, I knew I could create a space worthy of the home. We continued the Carrara stone in the bath to complement the beautiful fireplace in that room."



**Master Work** The master bathroom (LEFT) is outfitted with THG faucets and a Lacava sink. Hudson Valley Lighting and Samuel Heath towel bars are also through Klaff's. See Resources.





## WHAT'S NEW

### DIVINE DECO

In the Klaff's downstairs powder room, black and white AKDO tile has graphic impact in a high-gloss Deco pattern, part of the Origin ceramic collection. *Price upon request, through Klaff's, Norwalk, 203-866-1603, Danbury, 203-792-3903, klaffs.com, akdo.com.*



### STONE AGE

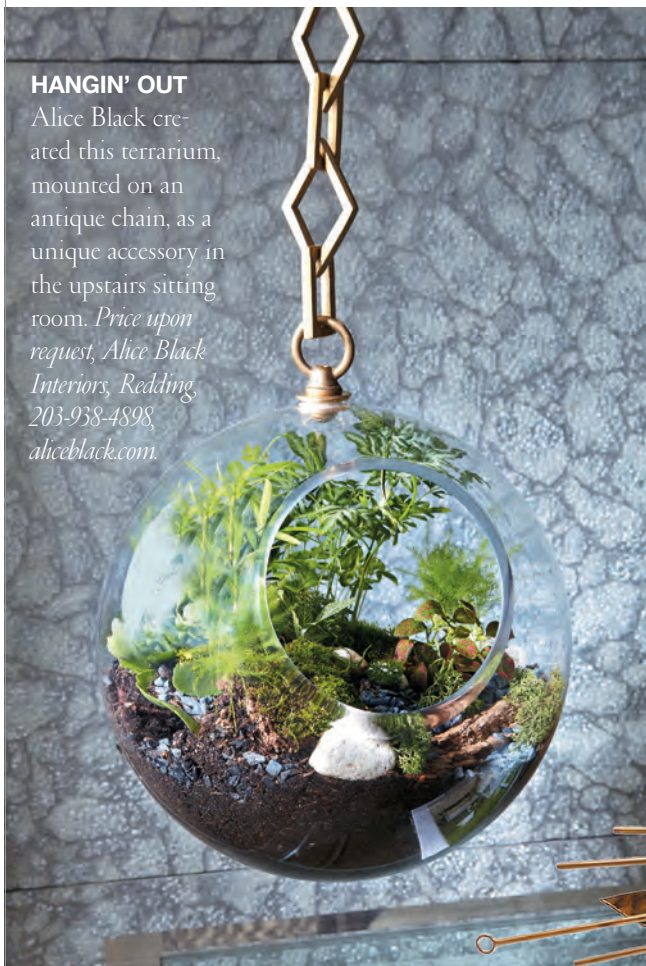
A custom-designed cocktail table by Pavarini Design enhances the living room's eclectic aesthetic with a Plexi-Craft bottom and Gault Stone top. *Trapezoid slab cocktail table, price upon request, NYC, 212-749-2047, pavarinidesign.com.*

### CALL OF THE WILD

A Zebra looped wool rug from Stark brings nature and pattern into the living room. *Rawr! Price upon request, (T), Stamford, 203-899-1771, starkcarpet.com.*

### HANGIN' OUT

Alice Black created this terrarium, mounted on an antique chain, as a unique accessory in the upstairs sitting room. *Price upon request, Alice Black Interiors, Redding, 203-938-4898, alicebblack.com.*



### CATCHING FIRE

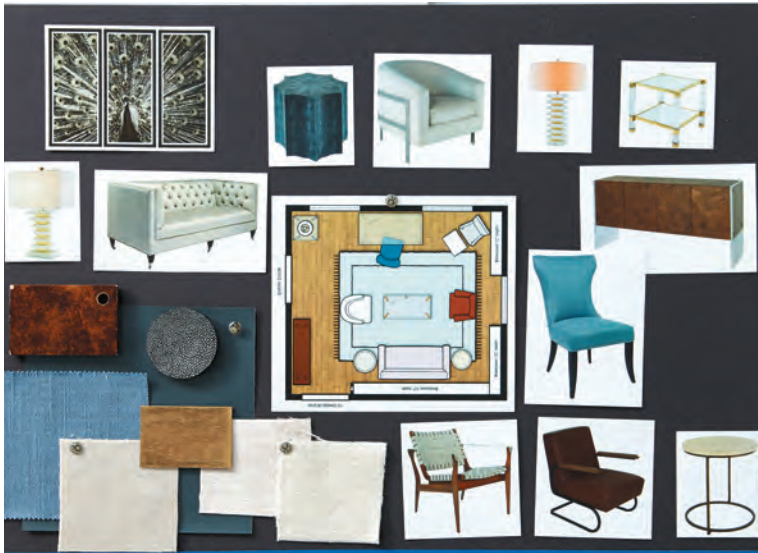
Hand-hammered iron with a gold finish, Global Views' Flame ceiling mounted light fixture wakes up the Ken Gemes-designed guest bedroom. *\$2,247, (T), NYDC, 212-725-8439, globalviews.com.*







## DESIGN BOARDS



### LIBRARY

Christina Murphy for Decorist and Safavieh design team

Artwork, Napa end table, Vernon club chair, Currey & Company table lamp, Angie end table, Gerard console, Halston side chair, Lula end table, Hamel arm chair, Dilan Safari chair and materials, Safavieh Home Furnishings. **Paint swatch**, Hague Blue, #30, Farrow & Ball



### MASTER BEDROOM

Wakefield Design Center

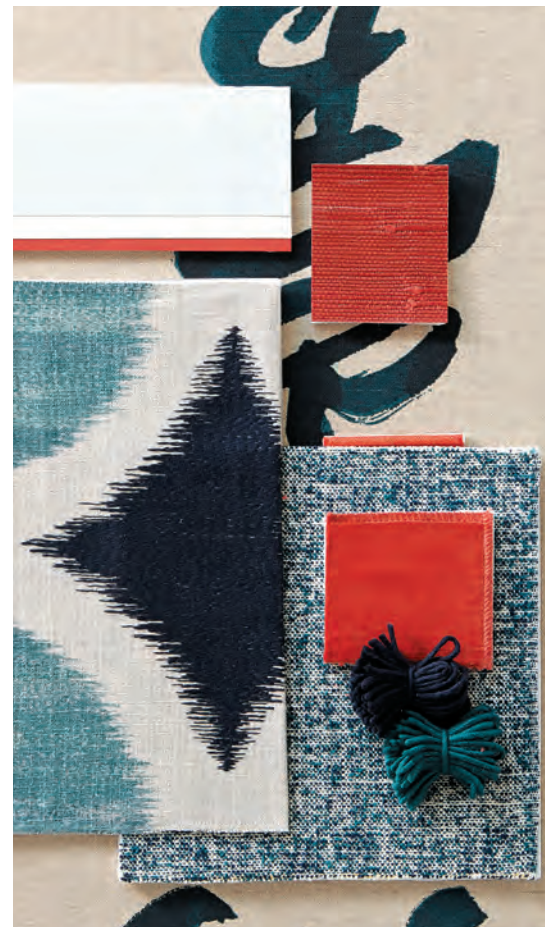
(CLOCKWISE FROM TOP LEFT) **Specialty painting**, Eye to Eye Designs by Michael James. **Cut paper**, Wakefield Private Label. **Sofa**, Kidney sofa with Ruby Platinum fabric, #4890-K, Directional. **Swivel chairs**, Jo Chair with stainless steel base, Thayer Coggin. **Rug**, Palace Oriental Rugs. **Fur**, Wakefield Private Label. **Bed frame**, Maxime button-tufted headboard and footboard, in Espresso finish fabric, #2860-011z, Bernhardt.



### GUEST BEDROOM

Last Detail  
Interior Design

(CLOCKWISE FROM TOP LEFT) **White linen**, #27591, Kravet. **Gray gimp**, # 977-56041 46, Samuel & Sons. **Fuchsia gimp**, # 977-56043 05, Samuel & Sons. **Headboard photo**, Alta, Serena & Lily. **Light fixture**, Rachel, #AH 4029, Visual Comfort. **Rug**, Laurel in Grey Pearl, JD Staron. **Geometric fabric**, Orchid Kuba F2, #1057B, Serena & Lily. **White sheet**, Gobi Embroidered in pewter, Serena & Lily. **Striped chenille**, #7441-02, Romo. **Lilac linen**, #4866-17, Manuel Canovas. **Gray linen**, #M412/03, Mark Alexander. **Fuchsia linen**, #7620-32, Romo. **White and gray band**, # 977-56041, Samuel & Sons.



### GUEST BEDROOM

Ken Gemes  
Interiors

(CLOCKWISE FROM TOP LEFT) **Paint swatches**, Borrowed Light, #2035; Wimborne White, #239; Blazer, #212; Farrow & Ball. **Chinese fabric**, Indigo Chinese Calligraphy, #1680, Design Legacy. **Grasscloth**, Terra Cotta grasscloth, Creative Metal & Wood. **French piping**, Coral, Samuel & Sons. **Blue tweed**, Momentum 3 Etch, Zoffany. **Vermillion velvet**, Holly Hunt. **Yarns for rug**, Diamant in Midnight and turquoise, Merida. **Geometric fabric**, Kumiko, #131358, Harlequin.

PHOTOGRAPHS BY KEITH SCOTT MORTON AND ERIC RICHARDS