



Situated in a wooded 6.8-acre parcel next to a stream, this modern farmhouse is the result of an extensive remodel and extension of an existing 400-square-foot cottage. The redesign strengthens the connection between interior and exterior by means of windows of different sizes and proportions that draw one's attention to natural wetlands and rock outcroppings across the nearby stream.

#### **Bug Acres of Woodstock**

**2,700 sq ft**

**CWB Architects**

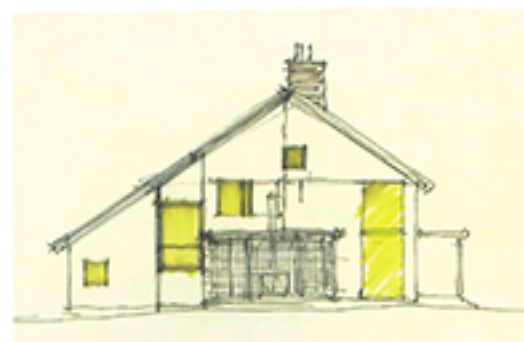
Woodstock, New York,  
United States

© Rachael L. Stollar

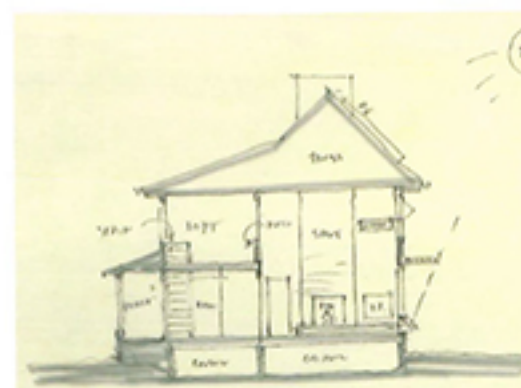




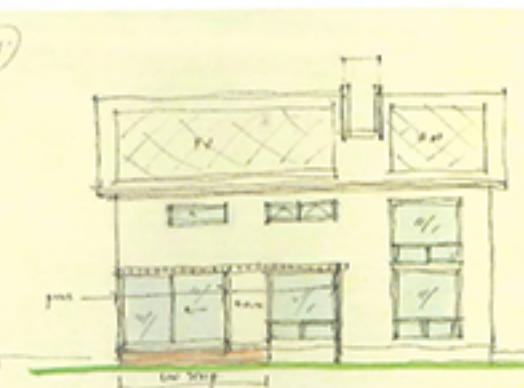
Preliminary site plan sketch



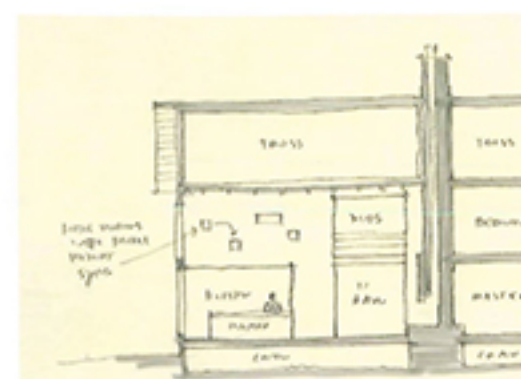
Preliminary west (entry) elevation



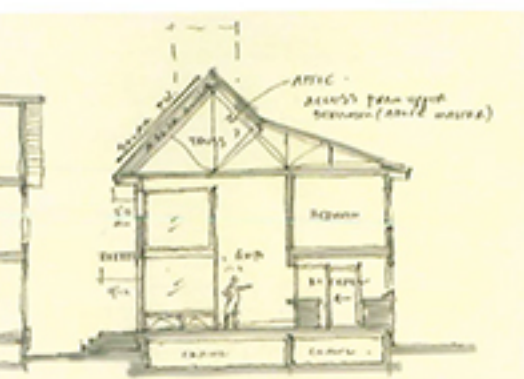
Preliminary building section looking east



Preliminary south elevation



Preliminary building section looking north



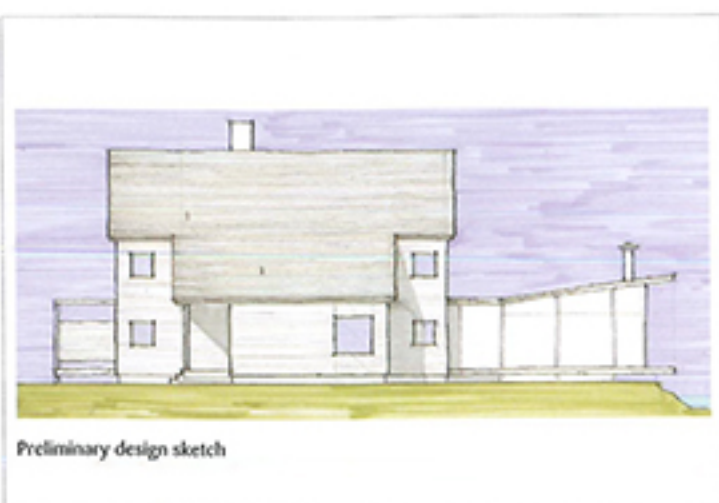
Preliminary building section looking west



009

Outdoor lighting is an important decorative and functional element. It can be used to illuminate paths, create focal points in the landscape around the home, and provide a sense of security.





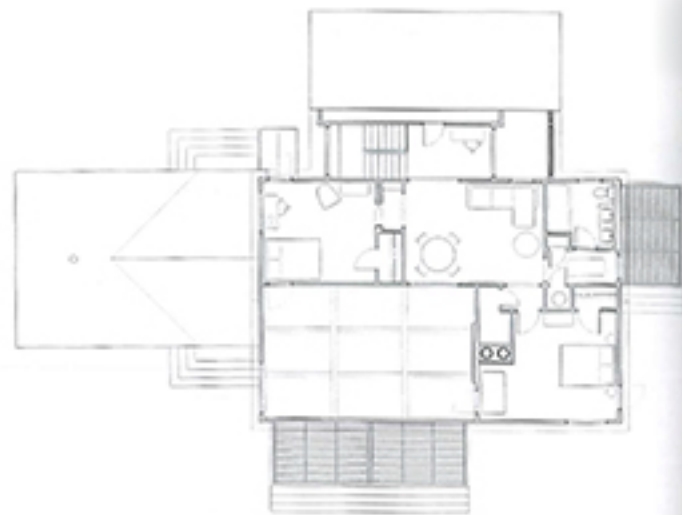
Preliminary design sketch







Ground floor plan



Second floor plan

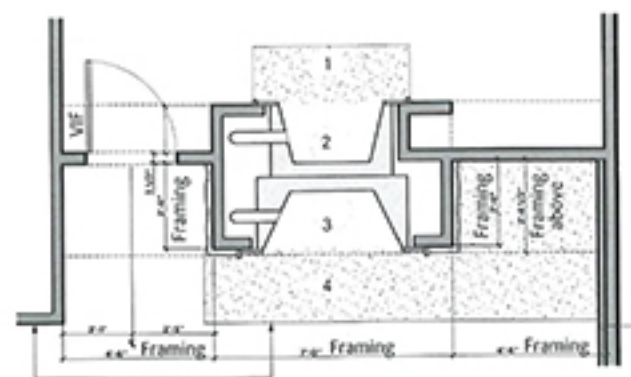
The remodel and extension transformed the modest two-bedroom, one-bathroom cottage into a stunning four-bedroom home.



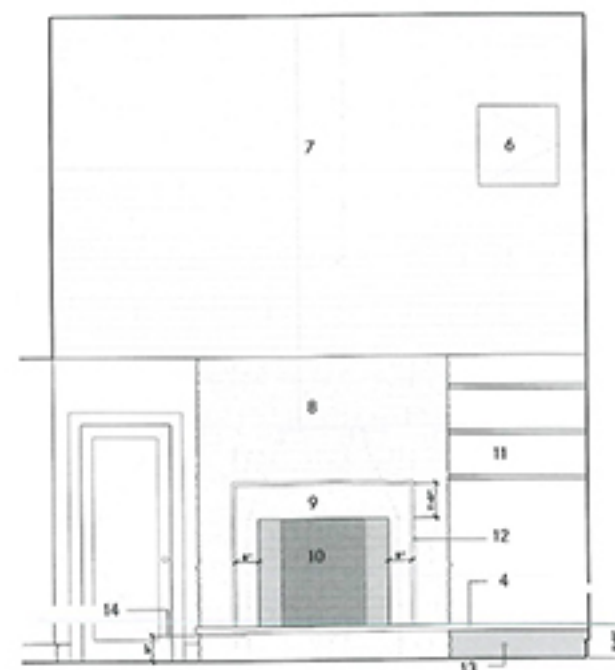
010

You can strengthen the connection between an interior space and the outdoors by using colors and patterns inspired by the natural world, natural materials such as stone and wood, and outdoor furniture.





Align front of hearth with finished gypsum wallboard 12



Family room fireplace. Plan and elevation

1. Flush hearth: 1/4" thick bluestone slab, flamed finish
2. 36" Isokern Standard fireplace
3. 48" Isokern Magnum fireplace
4. Raised hearth: 2" thick bluestone slab, flamed finish
5. Finished face of the wall furred in 2" x 1/2" plywood to conceal structural steel posts
6. Hatch to bedroom hidden within plank wall
7. Rough-sawn 1 x 4 paint grade pine planking at upper sections of wall
8. Dry stack thin veneer bluestone
9. Bluestone slab surround flamed finish
10. Firebox for 48" Isokern Magnum modular masonry fireplace
11. Open painted wood shelves
12. 1" x 3 1/2" bluestone back band around perimeter of slab surround
13. Open below for wood storage: back and side lined with bluestone slab
14. Top of foundation for living room fireplace unit



011

The mountain cabin represents an archetypal form and a symbol of refuge and shelter from the elements. This concept is strongly anchored by a fireplace, generally made of stone, which also ties the construction to its setting.





012

One-wall kitchens with islands are similar to galley kitchens, when it comes to traffic and work. They allow for an efficient workflow between the sink, fridge, and stove.



013

Wood-burning stoves are not exclusive to rustic cabins. They have found their way into many modern homes. New advances in technology make these stoves burn more efficiently and cleaner.







014

Colors, patterns, and textures come together to create a well-balanced and harmonious space. Patterns and prints should be selected according to the size and proportions of the room they are intended for.

